

CREEK WATERS

DUBAI CREEK HARBOUR

Floor Plan

EMAAR

CREEK WATERS

DUBAI CREEK HARBOUR

Townhouses - Floor Plan

EMAAR

CREEK WATERS

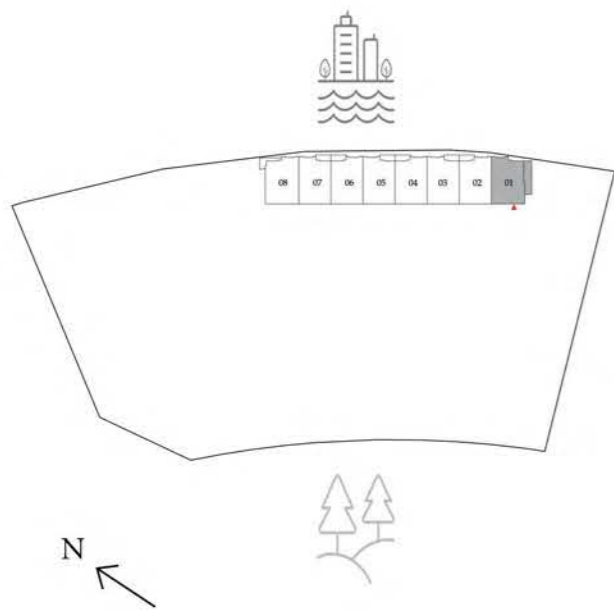
DUBAI CREEK HARBOUR

3 BEDROOM

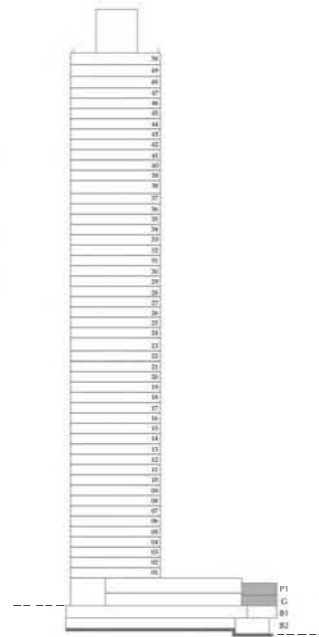
LEVEL G, P1 & 01 UNIT 01

SUITE AREA	1,869.26 SQ. FT.	173.66 SQ .M.
BALCONY AREA	1,145.28 SQ. FT.	106.40 SQ .M.
TOTAL AREA	3,014.54 SQ. FT.	280.06 SQ .M.

KEY PLAN



KEY SECTION



GROUND FLOOR



PODIUM 01



LEVEL 01

FLOOR PLAN 1. All dimensions are in imperial and metric, and measured from finish to finish excluding construction tolerances. 2. All materials, dimensions, and drawings are approximately only. Information is subject to change without notice, at developer's absolute discretion. 4. Actual area may vary from the stated area. 5. Drawings not to scale. 6. All images used are for illustrative purposes only and do not represent the actual size, features, specifications, fittings, and furnishings. 7. The developer reserves the right to make revisions / alterations, at its absolute discretion, without any liability whatsoever.

CREEK WATERS

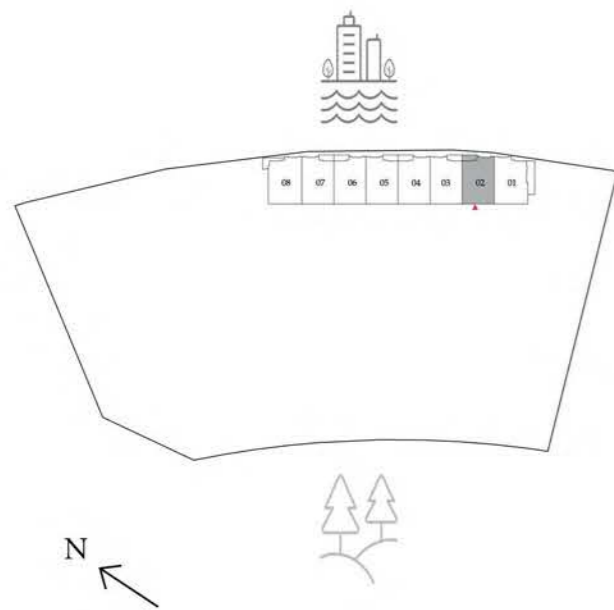
DUBAI CREEK HARBOUR

3 BEDROOM

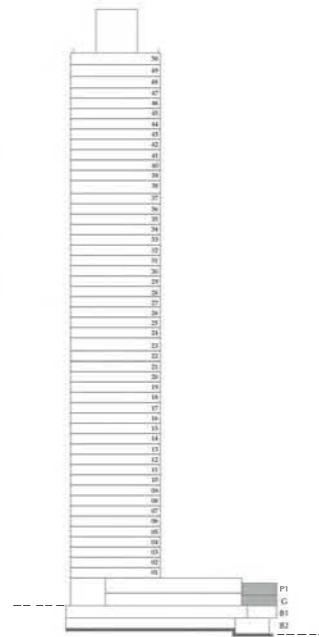
LEVEL G, P1 & 01 UNIT 02

SUITE AREA	1,866.35 SQ. FT.	173.39 SQ .M.
BALCONY AREA	1,070.04 SQ. FT.	99.41 SQ .M.
TOTAL AREA	2,936.39 SQ. FT.	272.80 SQ .M.

KEY PLAN



KEY SECTION



GROUND FLOOR



PODIUM 01



LEVEL 01

FLOOR PLAN 1. All dimensions are in imperial and metric, and measured from finish to finish excluding construction tolerances. 2. All materials, dimesions, and drawings are approximately only. Information is subject to change without notice, at developer's absolute discretion. 4. Actual area may vary from the stated area. 5. Drawings not to scale. 6. All images used are for illustrative purposes only and do not represent the actual size, features, specifications, fittings, and furnishings. 7. The developer reserves the right to make revisions / alterations, at it's absolute discretion, without any liability whatsoever.

CREEK WATERS

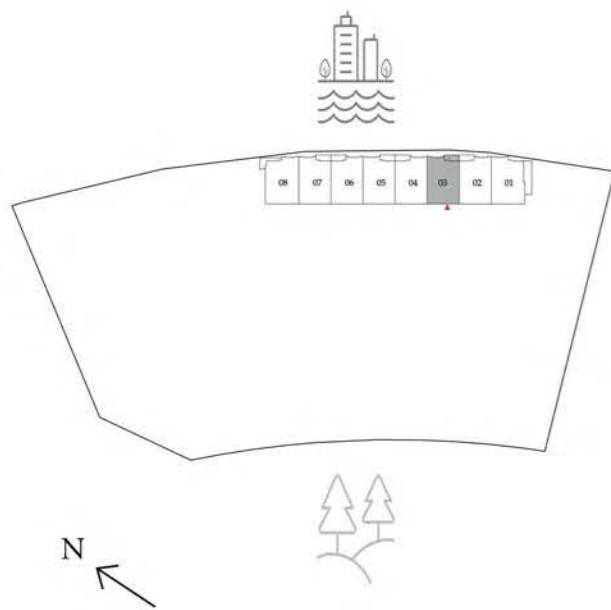
DUBAI CREEK HARBOUR

3 BEDROOM

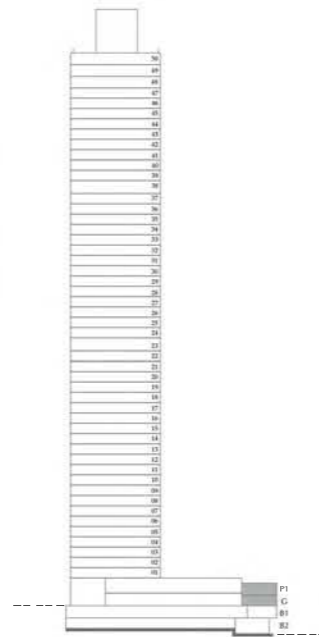
LEVEL G, P1 & 01 UNIT 03

SUITE AREA	1,866.35 SQ. FT.	173.39 SQ .M.
BALCONY AREA	1,070.04 SQ. FT.	99.41 SQ .M.
TOTAL AREA	2,936.39 SQ. FT.	272.80 SQ .M.

KEY PLAN



KEY SECTION



GROUND FLOOR



PODIUM 01



LEVEL 01

FLOOR PLAN 1. All dimensions are in imperial and metric, and measured from finish to finish excluding construction tolerances. 2. All materials, dimensions, and drawings are approximately only. Information is subject to change without notice, at developer's absolute discretion. 4. Actual area may vary from the stated area. 5. Drawings not to scale. 6. All images used are for illustrative purposes only and do not represent the actual size, features, specifications, fittings, and furnishings. 7. The developer reserves the right to make revisions / alterations, at its absolute discretion, without any liability whatsoever.

CREEK WATERS

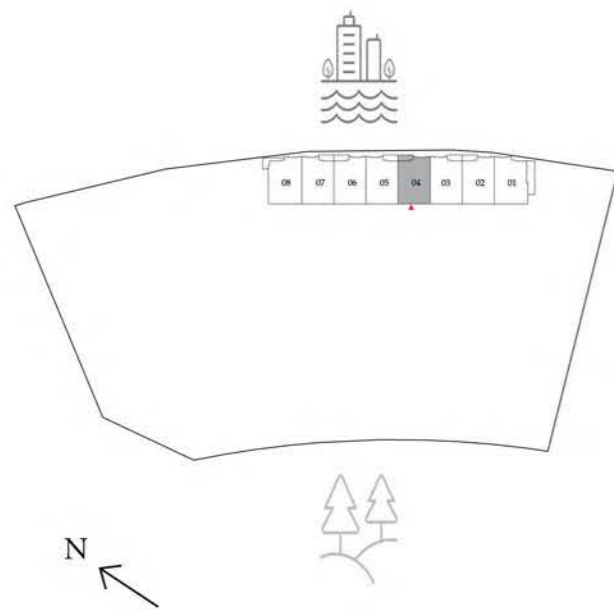
DUBAI CREEK HARBOUR

3 BEDROOM

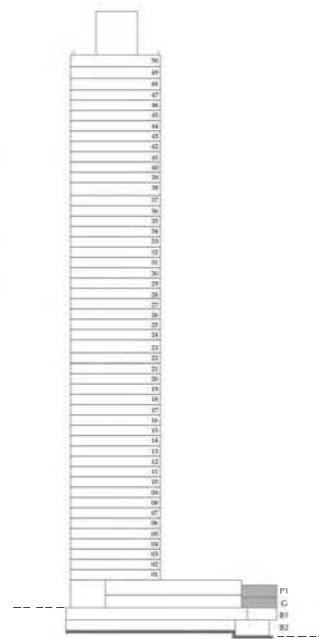
LEVEL G, P1 & 01 UNIT 04

SUITE AREA	1,866.35 SQ. FT.	173.39 SQ .M.
BALCONY AREA	1,070.04 SQ. FT.	99.41 SQ .M.
TOTAL AREA	2,936.39 SQ. FT.	272.80 SQ .M.

KEY PLAN



KEY SECTION



GROUND FLOOR



PODIUM 01



LEVEL 01

FLOOR PLAN 1. All dimensions are in imperial and metric, and measured from finish to finish excluding construction tolerances. 2. All materials, dimesions, and drawings are approximately only. Information is subject to change without notice, at developer's absolute discretion. 4. Actual area may vary from the stated area. 5. Drawings not to scale. 6. All images used are for illustrative purposes only and do not represent the actual size, features, specifications, fittings, and furnishings. 7. The developer reserves the right to make revisions / alterations, at it's absolute discretion, without any liability whatsoever.

CREEK WATERS

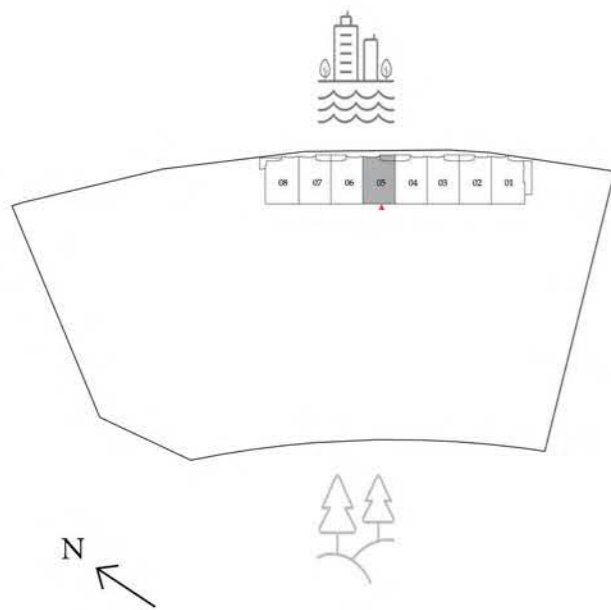
DUBAI CREEK HARBOUR

3 BEDROOM

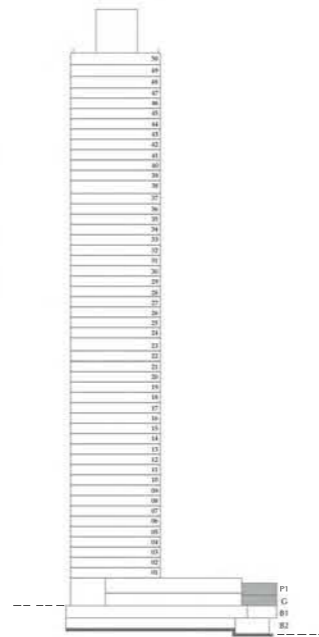
LEVEL G, P1 & 01 UNIT 05

SUITE AREA	1,866.35 SQ. FT.	173.39 SQ .M.
BALCONY AREA	1,070.04 SQ. FT.	99.41 SQ .M.
TOTAL AREA	2,936.39 SQ. FT.	272.80 SQ .M.

KEY PLAN



KEY SECTION



GROUND FLOOR



PODIUM 01



LEVEL 01

FLOOR PLAN 1. All dimensions are in imperial and metric, and measured from finish to finish excluding construction tolerances. 2. All materials, dimensions, and drawings are approximately only. Information is subject to change without notice, at developer's absolute discretion. 4. Actual area may vary from the stated area. 5. Drawings not to scale. 6. All images used are for illustrative purposes only and do not represent the actual size, features, specifications, fittings, and furnishings. 7. The developer reserves the right to make revisions / alterations, at its absolute discretion, without any liability whatsoever.

CREEK WATERS

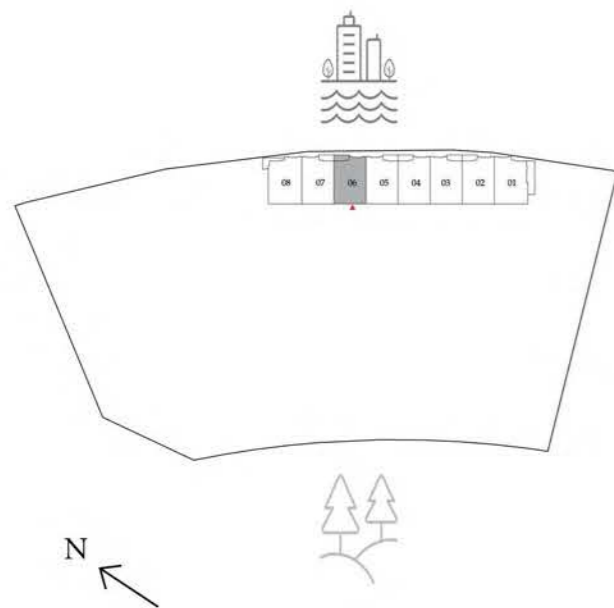
DUBAI CREEK HARBOUR

3 BEDROOM

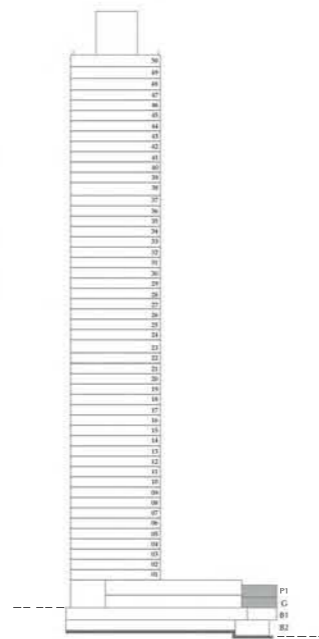
LEVEL G, P1 & 01 UNIT 06

SUITE AREA	1,866.35 SQ. FT.	173.39 SQ .M.
BALCONY AREA	1,070.04 SQ. FT.	99.41 SQ .M.
TOTAL AREA	2,936.39 SQ. FT.	272.80 SQ .M.

KEY PLAN



KEY SECTION



GROUND FLOOR



PODIUM 01



LEVEL 01

FLOOR PLAN 1. All dimensions are in imperial and metric, and measured from finish to finish excluding construction tolerances. 2. All materials, dimensions, and drawings are approximately only. Information is subject to change without notice, at developer's absolute discretion. 4. Actual area may vary from the stated area. 5. Drawings not to scale. 6. All images used are for illustrative purposes only and do not represent the actual size, features, specifications, fittings, and furnishings. 7. The developer reserves the right to make revisions / alterations, at its absolute discretion, without any liability whatsoever.

CREEK WATERS

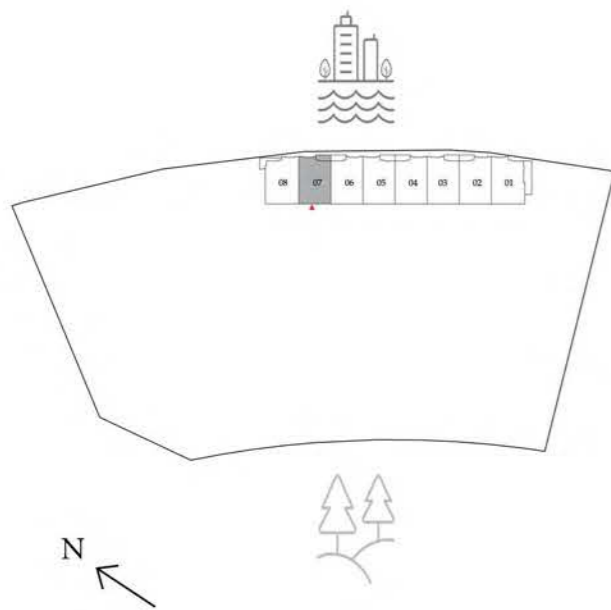
DUBAI CREEK HARBOUR

3 BEDROOM

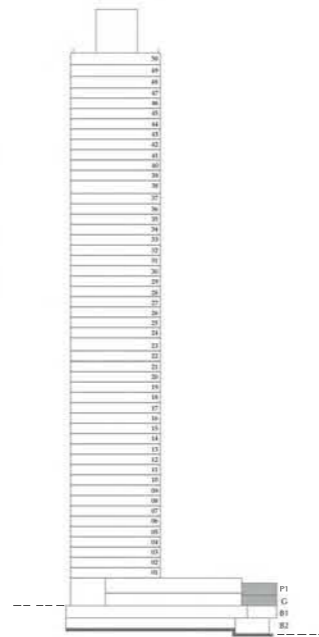
LEVEL G, P1 & 01 UNIT 07

SUITE AREA	1,866.35 SQ. FT.	173.39 SQ .M.
BALCONY AREA	1,070.04 SQ. FT.	99.41 SQ .M.
TOTAL AREA	2,936.39 SQ. FT.	272.80 SQ .M.

KEY PLAN



KEY SECTION



GROUND FLOOR



PODIUM 01



LEVEL 01

FLOOR PLAN 1. All dimensions are in imperial and metric, and measured from finish to finish excluding construction tolerances. 2. All materials, dimensions, and drawings are approximately only. Information is subject to change without notice, at developer's absolute discretion. 4. Actual area may vary from the stated area. 5. Drawings not to scale. 6. All images used are for illustrative purposes only and do not represent the actual size, features, specifications, fittings, and furnishings. 7. The developer reserves the right to make revisions / alterations, at its absolute discretion, without any liability whatsoever.

CREEK WATERS

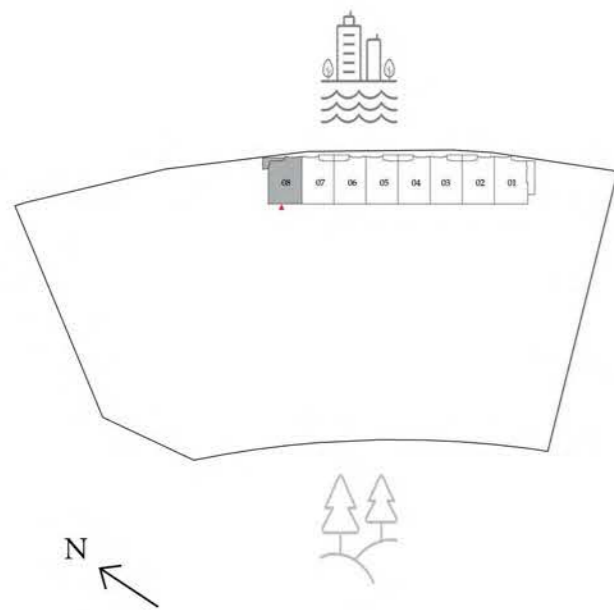
DUBAI CREEK HARBOUR

3 BEDROOM

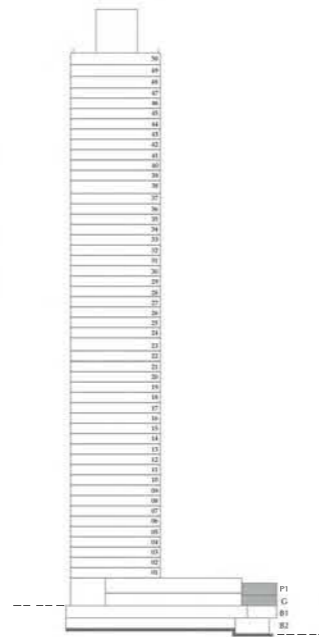
LEVEL G, P1 & 01 UNIT 08

SUITE AREA	1,864.42 SQ. FT.	173.21 SQ .M.
BALCONY AREA	1,056.59 SQ. FT.	98.16 SQ .M.
TOTAL AREA	2,921.00 SQ. FT.	271.37 SQ .M.

KEY PLAN



KEY SECTION



GROUND FLOOR



PODIUM 01



LEVEL 01

FLOOR PLAN 1. All dimensions are in imperial and metric, and measured from finish to finish excluding construction tolerances. 2. All materials, dimesions, and drawings are approximately only. Information is subject to change without notice, at developer's absolute discretion. 4. Actual area may vary from the stated area. 5. Drawings not to scale. 6. All images used are for illustrative purposes only and do not represent the actual size, features, specifications, fittings, and furnishings. 7. The developer reserves the right to make revisions / alterations, at it's absolute discretion, without any liability whatsoever.

CREEK WATERS

DUBAI CREEK HARBOUR

Apartments - Floor Plan

EMAAR

CREEK WATERS

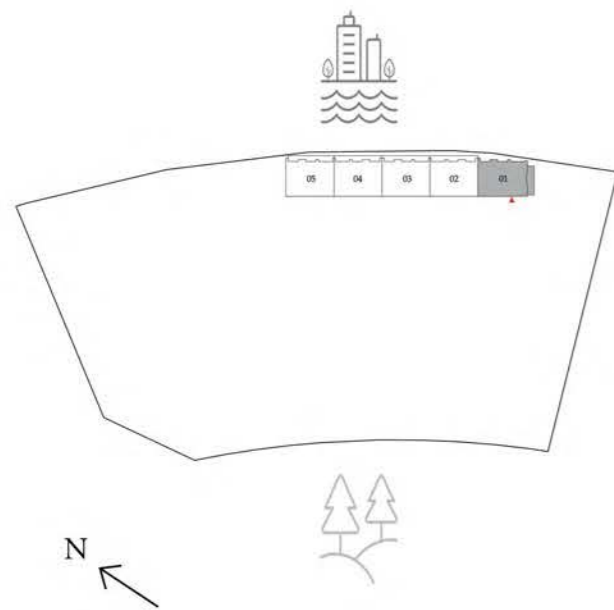
DUBAI CREEK HARBOUR

2 BEDROOM

LEVEL B1 UNIT 01

SUITE AREA	1,075.75 SQ. FT.	99.94 SQ .M.
BALCONY AREA	154.89 SQ. FT.	14.39 SQ .M.
TOTAL AREA	1,230.64 SQ. FT.	114.33 SQ .M.

KEY PLAN



KEY SECTION



FLOOR PLAN 1. All dimensions are in imperial and metric, and measured from finish to finish excluding construction tolerances. 2. All materials, dimesions, and drawings are approximately only. Information is subject to change without notice, at developer's absolute discretion. 4. Actual area may vary from the stated area. 5. Drawings not to scale. 6. All images used are for illustrative purposes only and do not represent the actual size, features, specifications, fittings, and furnishings. 7. The developer reserves the right to make revisions / alterations, at it's absolute discretion, without any liability whatsoever.

CREEK WATERS

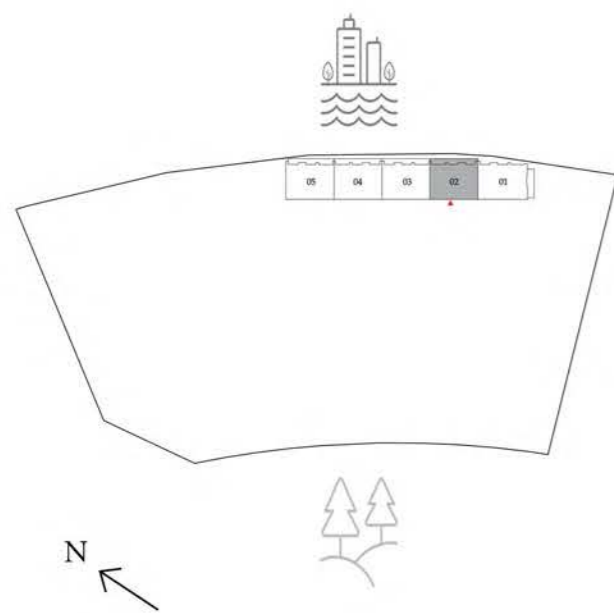
DUBAI CREEK HARBOUR

2 BEDROOM

LEVEL B1 UNIT 02

SUITE AREA	1,086.19 SQ. FT.	100.91 SQ .M.
BALCONY AREA	196.33 SQ. FT.	18.24 SQ .M.
TOTAL AREA	1,282.52 SQ. FT.	119.15 SQ .M.

KEY PLAN



KEY SECTION



FLOOR PLAN 1. All dimensions are in imperial and metric, and measured from finish to finish excluding construction tolerances. 2. All materials, dimesions, and drawings are approximately only. Information is subject to change without notice, at developer's absolute discretion. 4. Actual area may vary from the stated area. 5. Drawings not to scale. 6. All images used are for illustrative purposes only and do not represent the actual size, features, specifications, fittings, and furnishings. 7. The developer reserves the right to make revisions / alterations, at it's absolute discretion, without any liability whatsoever.

CREEK WATERS

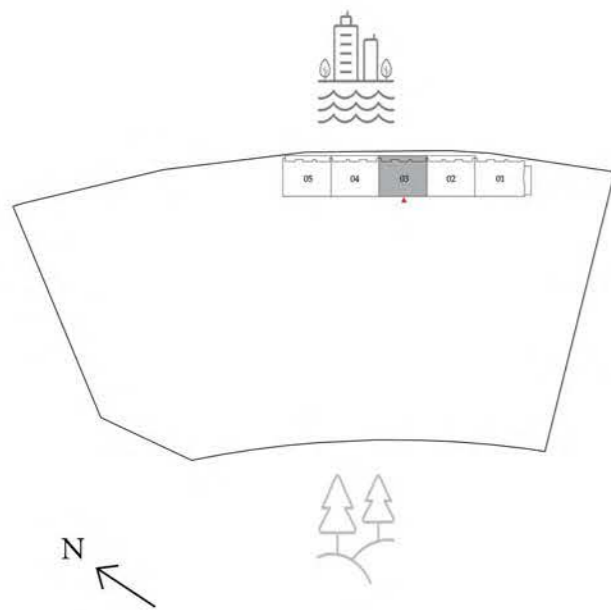
DUBAI CREEK HARBOUR

2 BEDROOM

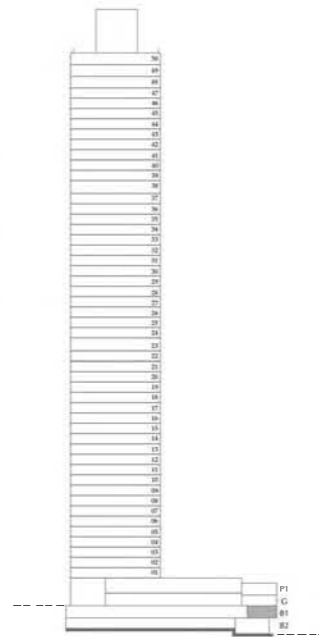
LEVEL B1 UNIT 03

SUITE AREA	1,086.08 SQ. FT.	100.90 SQ .M.
BALCONY AREA	200.64 SQ. FT.	18.64 SQ .M.
TOTAL AREA	1,286.72 SQ. FT.	119.54 SQ .M.

KEY PLAN



KEY SECTION



FLOOR PLAN 1. All dimensions are in imperial and metric, and measured from finish to finish excluding construction tolerances. 2. All materials, dimensions, and drawings are approximately only. Information is subject to change without notice, at developer's absolute discretion. 4. Actual area may vary from the stated area. 5. Drawings not to scale. 6. All images used are for illustrative purposes only and do not represent the actual size, features, specifications, fittings, and furnishings. 7. The developer reserves the right to make revisions / alterations, at its absolute discretion, without any liability whatsoever.

CREEK WATERS

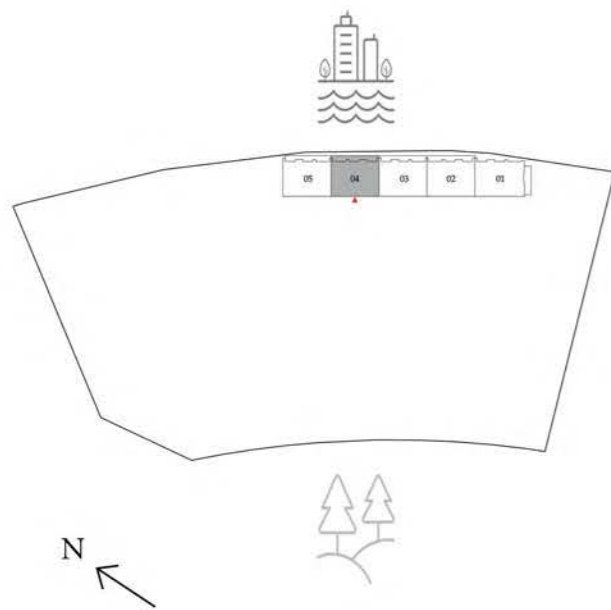
DUBAI CREEK HARBOUR

2 BEDROOM

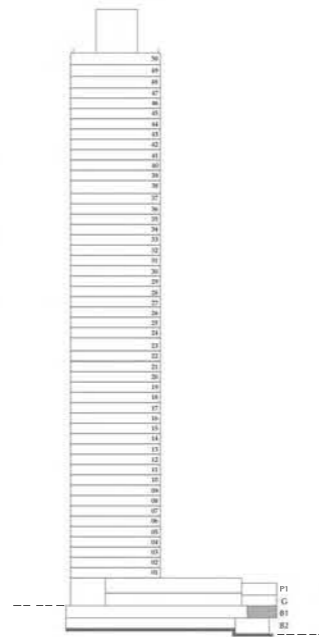
LEVEL B1 UNIT 04

SUITE AREA	1,068.21 SQ. FT.	99.24 SQ .M.
BALCONY AREA	199.56 SQ. FT.	18.54 SQ .M.
TOTAL AREA	1,267.77 SQ. FT.	117.78 SQ .M.

KEY PLAN



KEY SECTION



FLOOR PLAN 1. All dimensions are in imperial and metric, and measured from finish to finish excluding construction tolerances. 2. All materials, dimensions, and drawings are approximately only. Information is subject to change without notice, at developer's absolute discretion. 4. Actual area may vary from the stated area. 5. Drawings not to scale. 6. All images used are for illustrative purposes only and do not represent the actual size, features, specifications, fittings, and furnishings. 7. The developer reserves the right to make revisions / alterations, at its absolute discretion, without any liability whatsoever.

CREEK WATERS

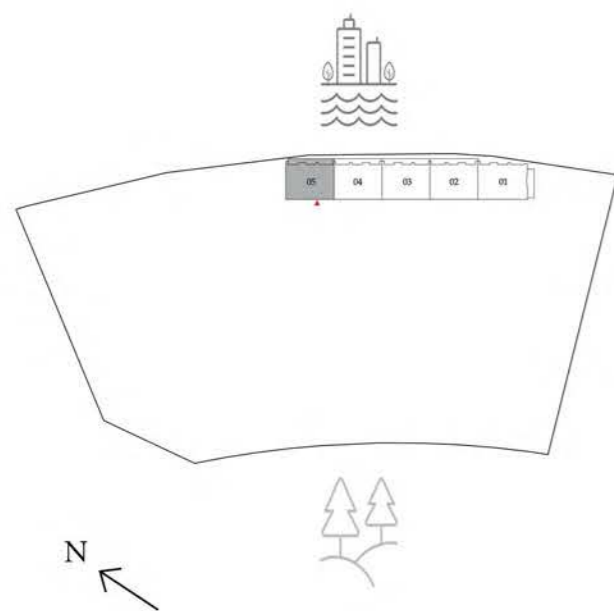
DUBAI CREEK HARBOUR

2 BEDROOM

LEVEL B1 UNIT 05

SUITE AREA	1,067.35 SQ. FT.	99.16 SQ .M.
BALCONY AREA	192.89 SQ. FT.	17.92 SQ .M.
TOTAL AREA	1,260.24 SQ. FT.	117.08 SQ .M.

KEY PLAN



KEY SECTION



FLOOR PLAN 1. All dimensions are in imperial and metric, and measured from finish to finish excluding construction tolerances. 2. All materials, dimensions, and drawings are approximately only. Information is subject to change without notice, at developer's absolute discretion. 4. Actual area may vary from the stated area. 5. Drawings not to scale. 6. All images used are for illustrative purposes only and do not represent the actual size, features, specifications, fittings, and furnishings. 7. The developer reserves the right to make revisions / alterations, at its absolute discretion, without any liability whatsoever.

CREEK WATERS

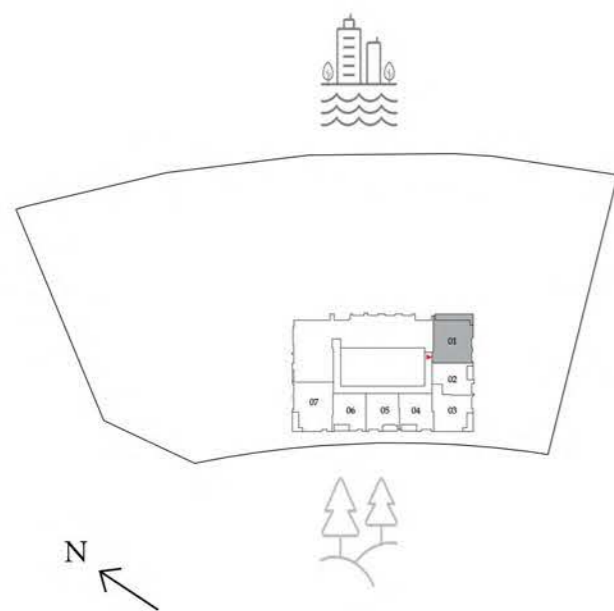
DUBAI CREEK HARBOUR

2 BEDROOM

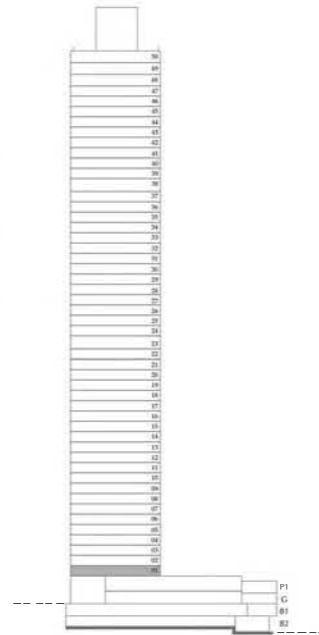
LEVEL 01 UNIT 01

SUITE AREA	1,061.43 SQ. FT.	98.61 SQ .M.
BALCONY AREA	175.34 SQ. FT.	16.29 SQ .M.
TOTAL AREA	1,236.77 SQ. FT.	114.90 SQ .M.

KEY PLAN



KEY SECTION



FLOOR PLAN 1. All dimensions are in imperial and metric, and measured from finish to finish excluding construction tolerances. 2. All materials, dimensions, and drawings are approximately only. Information is subject to change without notice, at developer's absolute discretion. 4. Actual area may vary from the stated area. 5. Drawings not to scale. 6. All images used are for illustrative purposes only and do not represent the actual size, features, specifications, fittings, and furnishings. 7. The developer reserves the right to make revisions / alterations, at its absolute discretion, without any liability whatsoever.

CREEK WATERS

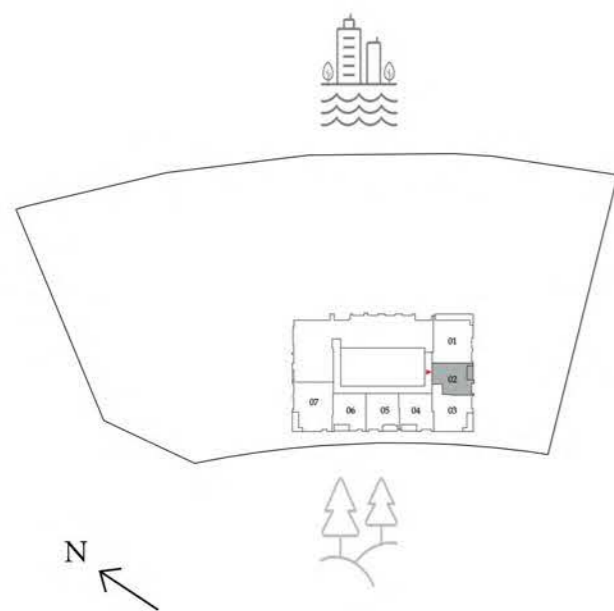
DUBAI CREEK HARBOUR

1 BEDROOM

LEVEL 01 UNIT 02

SUITE AREA	676.19 SQ. FT.	62.82 SQ .M.
BALCONY AREA	76.85 SQ. FT.	7.14 SQ .M.
TOTAL AREA	753.04 SQ. FT.	69.96 SQ .M.

KEY PLAN



KEY SECTION



FLOOR PLAN 1. All dimensions are in imperial and metric, and measured from finish to finish excluding construction tolerances. 2. All materials, dimensions, and drawings are approximately only. Information is subject to change without notice, at developer's absolute discretion. 4. Actual area may vary from the stated area. 5. Drawings not to scale. 6. All images used are for illustrative purposes only and do not represent the actual size, features, specifications, fittings, and furnishings. 7. The developer reserves the right to make revisions / alterations, at its absolute discretion, without any liability whatsoever.

CREEK WATERS

DUBAI CREEK HARBOUR

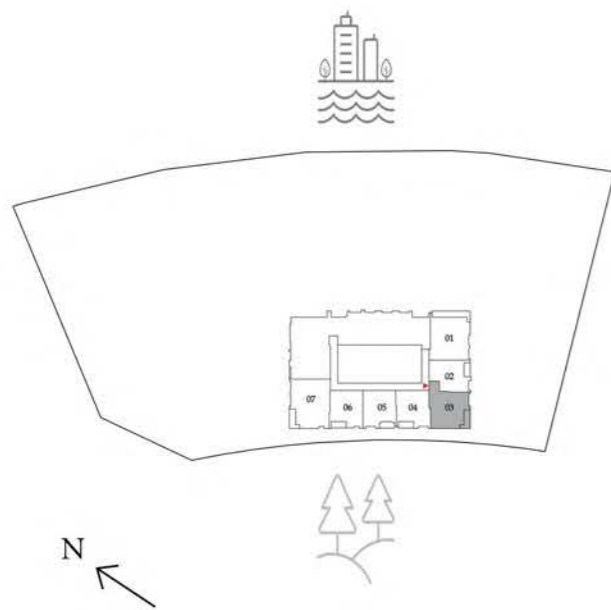
1 BEDROOM

LEVEL 01 UNIT 03

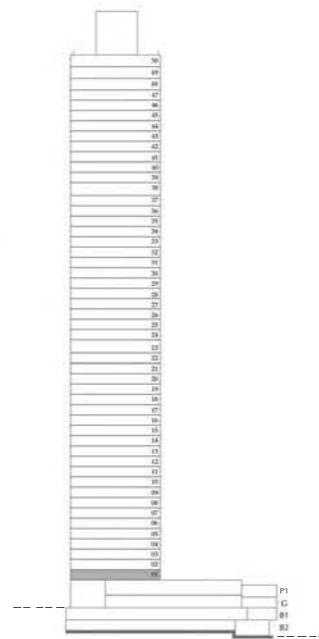
SUITE AREA	825.38 SQ. FT.	76.68 SQ .M.
BALCONY AREA	95.58 SQ. FT.	8.88 SQ .M.
TOTAL AREA	920.96 SQ. FT.	85.56 SQ .M.



KEY PLAN



KEY SECTION



FLOOR PLAN 1. All dimensions are in imperial and metric, and measured from finish to finish excluding construction tolerances. 2. All materials, dimesions, and drawings are approximately only. Information is subject to change without notice, at developer's absolute discretion. 4. Actual area may vary from the stated area. 5. Drawings not to scale. 6. All images used are for illustrative purposes only and do not represent the actual size, features, specifications, fittings, and furnishings. 7. The developer reserves the right to make revisions / alterations, at it's absolute discretion, without any liability whatsoever.

CREEK WATERS

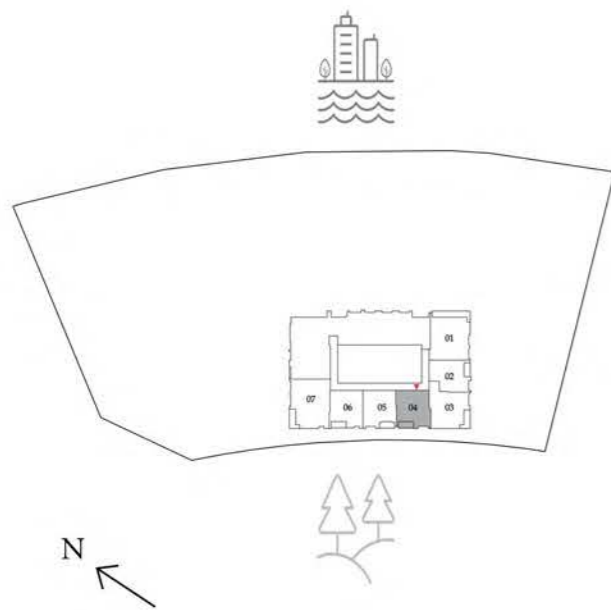
DUBAI CREEK HARBOUR

1 BEDROOM

LEVEL 01 UNIT 04

SUITE AREA	692.66 SQ. FT.	64.35 SQ .M.
BALCONY AREA	82.02 SQ. FT.	7.62 SQ .M.
TOTAL AREA	774.68 SQ. FT.	71.97 SQ .M.

KEY PLAN



KEY SECTION



FLOOR PLAN 1. All dimensions are in imperial and metric, and measured from finish to finish excluding construction tolerances. 2. All materials, dimesions, and drawings are approximately only. Information is subject to change without notice, at developer's absolute discretion. 4. Actual area may vary from the stated area. 5. Drawings not to scale. 6. All images used are for illustrative purposes only and do not represent the actual size, features, specifications, fittings, and furnishings. 7. The developer reserves the right to make revisions / alterations, at it's absolute discretion, without any liability whatsoever.

CREEK WATERS

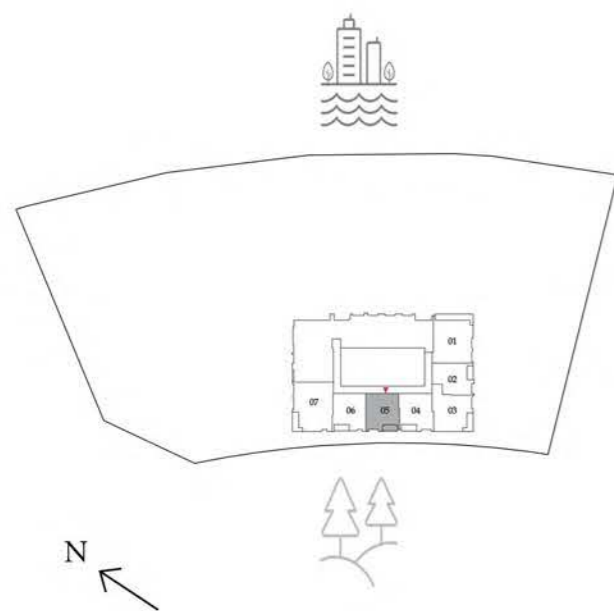
DUBAI CREEK HARBOUR

1 BEDROOM

LEVEL 01 UNIT 05

SUITE AREA	672.10 SQ. FT.	62.44 SQ .M.
BALCONY AREA	81.59 SQ. FT.	7.58 SQ .M.
TOTAL AREA	753.69 SQ. FT.	70.02 SQ .M.

KEY PLAN



KEY SECTION



FLOOR PLAN 1. All dimensions are in imperial and metric, and measured from finish to finish excluding construction tolerances. 2. All materials, dimensions, and drawings are approximately only. Information is subject to change without notice, at developer's absolute discretion. 4. Actual area may vary from the stated area. 5. Drawings not to scale. 6. All images used are for illustrative purposes only and do not represent the actual size, features, specifications, fittings, and furnishings. 7. The developer reserves the right to make revisions / alterations, at its absolute discretion, without any liability whatsoever.

CREEK WATERS

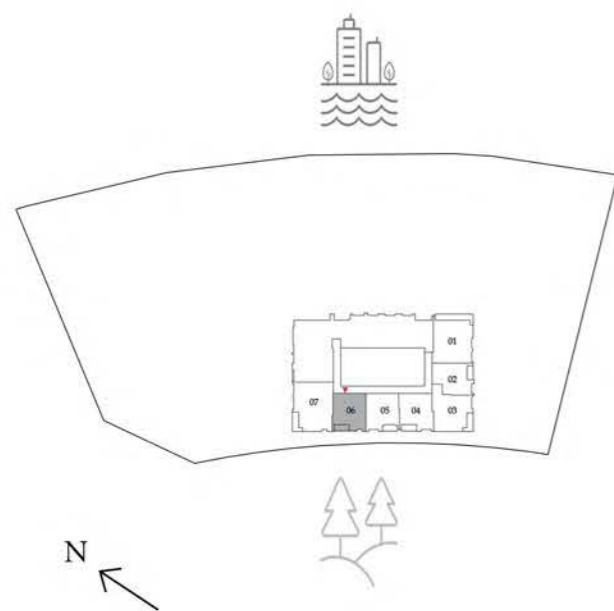
DUBAI CREEK HARBOUR

1 BEDROOM

LEVEL 01 UNIT 06

SUITE AREA	673.39 SQ. FT.	62.56 SQ .M.
BALCONY AREA	82.99 SQ. FT.	7.71 SQ .M.
TOTAL AREA	756.38 SQ. FT.	70.27 SQ .M.

KEY PLAN



KEY SECTION



FLOOR PLAN 1. All dimensions are in imperial and metric, and measured from finish to finish excluding construction tolerances. 2. All materials, dimensions, and drawings are approximately only. Information is subject to change without notice, at developer's absolute discretion. 4. Actual area may vary from the stated area. 5. Drawings not to scale. 6. All images used are for illustrative purposes only and do not represent the actual size, features, specifications, fittings, and furnishings. 7. The developer reserves the right to make revisions / alterations, at its absolute discretion, without any liability whatsoever.

CREEK WATERS

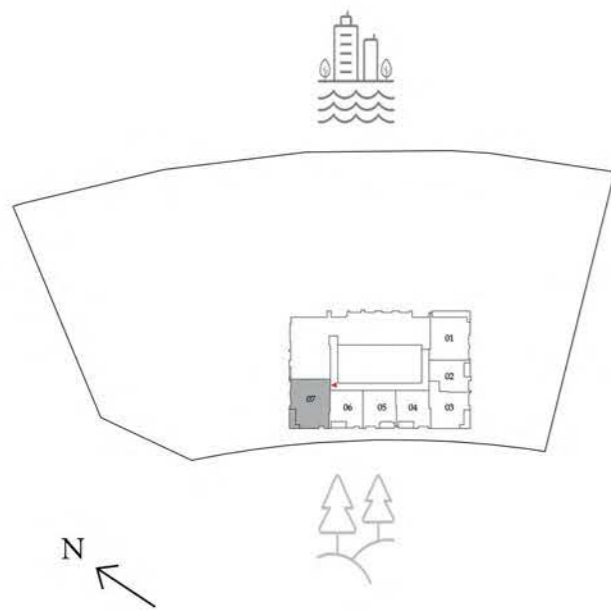
DUBAI CREEK HARBOUR

2 BEDROOM

LEVEL 01 UNIT 07

SUITE AREA	1,109.65 SQ. FT.	103.09 SQ .M.
BALCONY AREA	98.81 SQ. FT.	9.18 SQ .M.
TOTAL AREA	1,208.46 SQ. FT.	112.27 SQ .M.

KEY PLAN



KEY SECTION



FLOOR PLAN 1. All dimensions are in imperial and metric, and measured from finish to finish excluding construction tolerances. 2. All materials, dimesions, and drawings are approximately only. Information is subject to change without notice, at developer's absolute discretion. 4. Actual area may vary from the stated area. 5. Drawings not to scale. 6. All images used are for illustrative purposes only and do not represent the actual size, features, specifications, fittings, and furnishings. 7. The developer reserves the right to make revisions / alterations, at it's absolute discretion, without any liability whatsoever.

CREEK WATERS

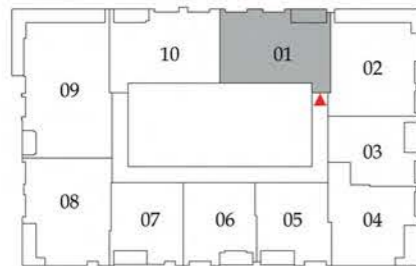
DUBAI CREEK HARBOUR

2 BEDROOM

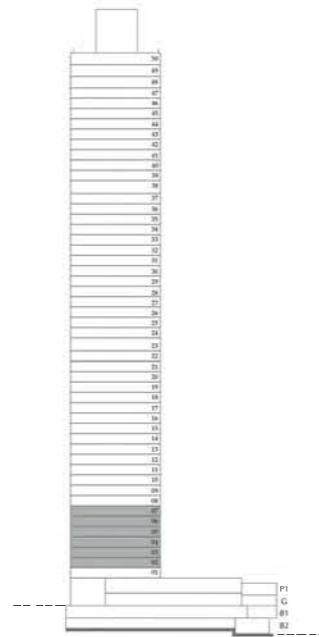
LEVEL 02 - 07 UNIT 01

SUITE AREA	1,054.86 SQ. FT.	98.00 SQ .M.
BALCONY AREA	79.76 SQ. FT.	7.41 SQ .M.
TOTAL AREA	1,134.62 SQ. FT.	105.41 SQ .M.

KEY PLAN



KEY SECTION



FLOOR PLAN 1. All dimensions are in imperial and metric, and measured from finish to finish excluding construction tolerances. 2. All materials, dimensions, and drawings are approximately only. Information is subject to change without notice, at developer's absolute discretion. 4. Actual area may vary from the stated area. 5. Drawings not to scale. 6. All images used are for illustrative purposes only and do not represent the actual size, features, specifications, fittings, and furnishings. 7. The developer reserves the right to make revisions / alterations, at its absolute discretion, without any liability whatsoever.

CREEK WATERS

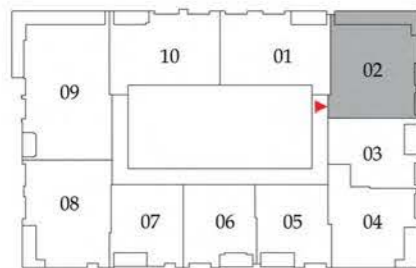
DUBAI CREEK HARBOUR

2 BEDROOM

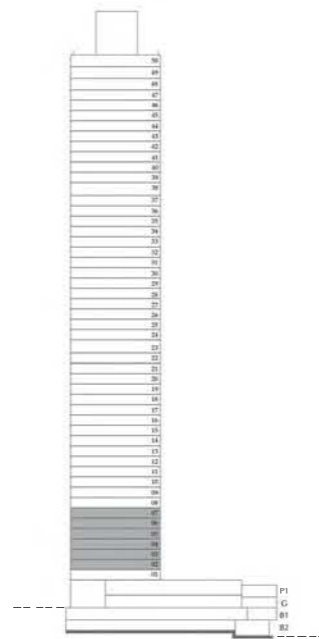
LEVEL 02 - 07 UNIT 02

SUITE AREA	1,061.64 SQ. FT.	98.63 SQ .M.
BALCONY AREA	179.54 SQ. FT.	16.68 SQ .M.
TOTAL AREA	1,241.19 SQ. FT.	115.31 SQ .M.

KEY PLAN



KEY SECTION



FLOOR PLAN 1. All dimensions are in imperial and metric, and measured from finish to finish excluding construction tolerances. 2. All materials, dimensions, and drawings are approximately only. Information is subject to change without notice, at developer's absolute discretion. 4. Actual area may vary from the stated area. 5. Drawings not to scale. 6. All images used are for illustrative purposes only and do not represent the actual size, features, specifications, fittings, and furnishings. 7. The developer reserves the right to make revisions / alterations, at its absolute discretion, without any liability whatsoever.

CREEK WATERS

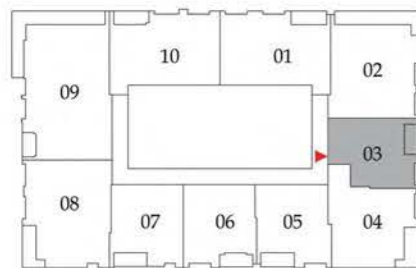
DUBAI CREEK HARBOUR

1 BEDROOM

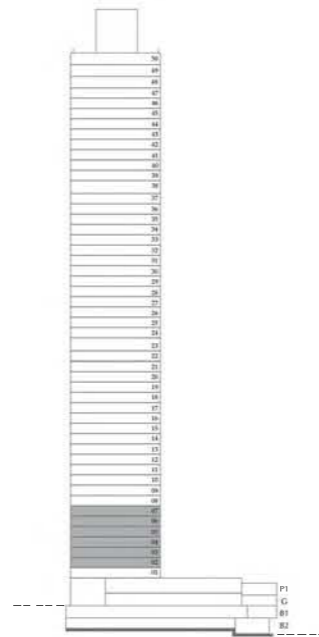
LEVEL 02 - 07 UNIT 03

SUITE AREA	683.62 SQ. FT.	63.51 SQ .M.
BALCONY AREA	73.19 SQ. FT.	6.80 SQ .M.
TOTAL AREA	756.81 SQ. FT.	70.31 SQ .M.

KEY PLAN



KEY SECTION



FLOOR PLAN 1. All dimensions are in imperial and metric, and measured from finish to finish excluding construction tolerances. 2. All materials, dimensions, and drawings are approximately only. Information is subject to change without notice, at developer's absolute discretion. 4. Actual area may vary from the stated area. 5. Drawings not to scale. 6. All images used are for illustrative purposes only and do not represent the actual size, features, specifications, fittings, and furnishings. 7. The developer reserves the right to make revisions / alterations, at its absolute discretion, without any liability whatsoever.

CREEK WATERS

DUBAI CREEK HARBOUR

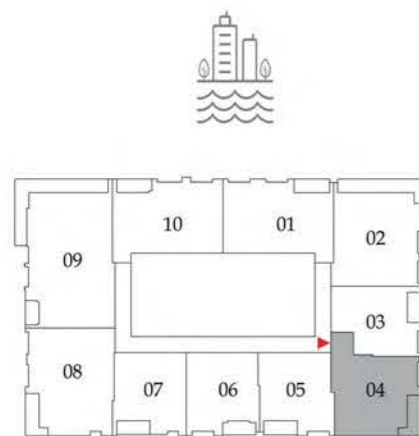
1 BEDROOM

LEVEL 02 - 07 UNIT 04

SUITE AREA	824.30 SQ. FT.	76.58 SQ .M.
BALCONY AREA	96.44 SQ. FT.	8.96 SQ .M.
TOTAL AREA	920.74 SQ. FT.	85.54 SQ .M.



KEY PLAN



KEY SECTION



FLOOR PLAN 1. All dimensions are in imperial and metric, and measured from finish to finish excluding construction tolerances. 2. All materials, dimesions, and drawings are approximately only. Information is subject to change without notice, at developer's absolute discretion. 4. Actual area may vary from the stated area. 5. Drawings not to scale. 6. All images used are for illustrative purposes only and do not represent the actual size, features, specifications, fittings, and furnishings. 7. The developer reserves the right to make revisions / alterations, at it's absolute discretion, without any liability whatsoever.

CREEK WATERS

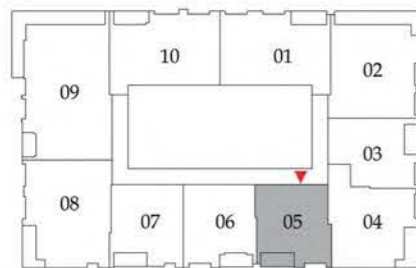
DUBAI CREEK HARBOUR

1 BEDROOM

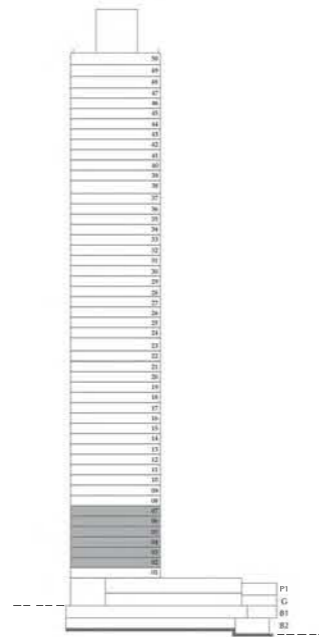
LEVEL 02 - 07 UNIT 05

SUITE AREA	698.15 SQ. FT.	64.86 SQ .M.
BALCONY AREA	78.15 SQ. FT.	7.26 SQ .M.
TOTAL AREA	776.29 SQ. FT.	72.12 SQ .M.

KEY PLAN



KEY SECTION



FLOOR PLAN 1. All dimensions are in imperial and metric, and measured from finish to finish excluding construction tolerances. 2. All materials, dimesions, and drawings are approximately only. Information is subject to change without notice, at developer's absolute discretion. 4. Actual area may vary from the stated area. 5. Drawings not to scale. 6. All images used are for illustrative purposes only and do not represent the actual size, features, specifications, fittings, and furnishings. 7. The developer reserves the right to make revisions / alterations, at it's absolute discretion, without any liability whatsoever.

CREEK WATERS

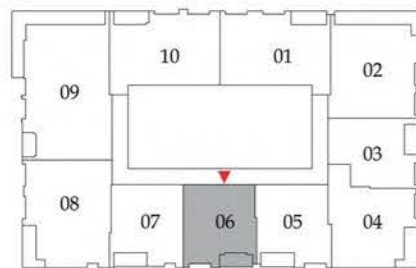
DUBAI CREEK HARBOUR

1 BEDROOM

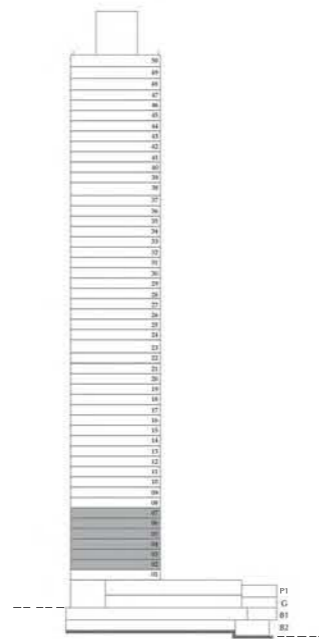
LEVEL 02 - 07 UNIT 06

SUITE AREA	674.57 SQ. FT.	62.67 SQ .M.
BALCONY AREA	78.90 SQ. FT.	7.33 SQ .M.
TOTAL AREA	753.47 SQ. FT.	70.00 SQ .M.

KEY PLAN



KEY SECTION



FLOOR PLAN 1. All dimensions are in imperial and metric, and measured from finish to finish excluding construction tolerances. 2. All materials, dimensions, and drawings are approximately only. Information is subject to change without notice, at developer's absolute discretion. 4. Actual area may vary from the stated area. 5. Drawings not to scale. 6. All images used are for illustrative purposes only and do not represent the actual size, features, specifications, fittings, and furnishings. 7. The developer reserves the right to make revisions / alterations, at its absolute discretion, without any liability whatsoever.

CREEK WATERS

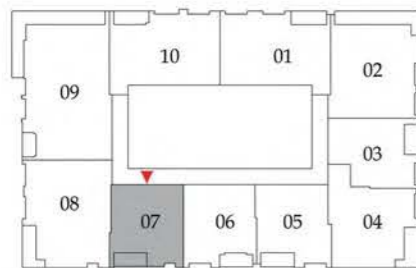
DUBAI CREEK HARBOUR

1 BEDROOM

LEVEL 02 - 07 UNIT 07

SUITE AREA	677.91 SQ. FT.	62.98 SQ .M.
BALCONY AREA	79.11 SQ. FT.	7.35 SQ .M.
TOTAL AREA	757.03 SQ. FT.	70.33 SQ .M.

KEY PLAN



KEY SECTION



FLOOR PLAN 1. All dimensions are in imperial and metric, and measured from finish to finish excluding construction tolerances. 2. All materials, dimensions, and drawings are approximately only. Information is subject to change without notice, at developer's absolute discretion. 4. Actual area may vary from the stated area. 5. Drawings not to scale. 6. All images used are for illustrative purposes only and do not represent the actual size, features, specifications, fittings, and furnishings. 7. The developer reserves the right to make revisions / alterations, at its absolute discretion, without any liability whatsoever.

CREEK WATERS

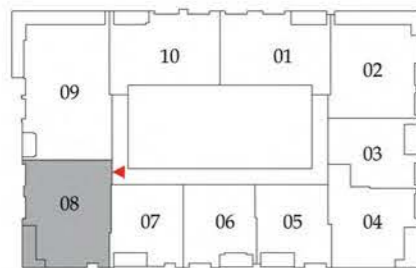
DUBAI CREEK HARBOUR

2 BEDROOM

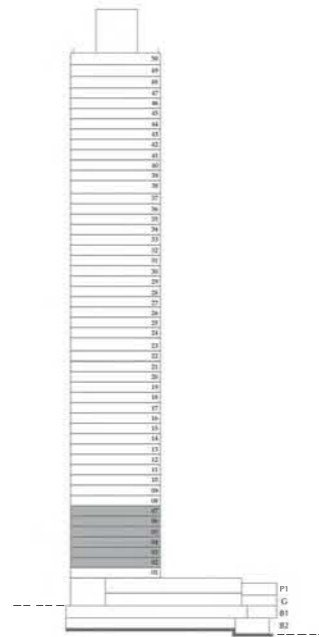
LEVEL 02 - 07 UNIT 08

SUITE AREA	1,110.94 SQ. FT.	103.21 SQ .M.
BALCONY AREA	99.89 SQ. FT.	9.28 SQ .M.
TOTAL AREA	1,210.83 SQ. FT.	112.49 SQ .M.

KEY PLAN



KEY SECTION



FLOOR PLAN 1. All dimensions are in imperial and metric, and measured from finish to finish excluding construction tolerances. 2. All materials, dimesions, and drawings are approximately only. Information is subject to change without notice, at developer's absolute discretion. 4. Actual area may vary from the stated area. 5. Drawings not to scale. 6. All images used are for illustrative purposes only and do not represent the actual size, features, specifications, fittings, and furnishings. 7. The developer reserves the right to make revisions / alterations, at it's absolute discretion, without any liability whatsoever.

CREEK WATERS

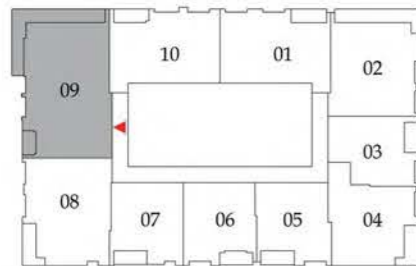
DUBAI CREEK HARBOUR

3 BEDROOM

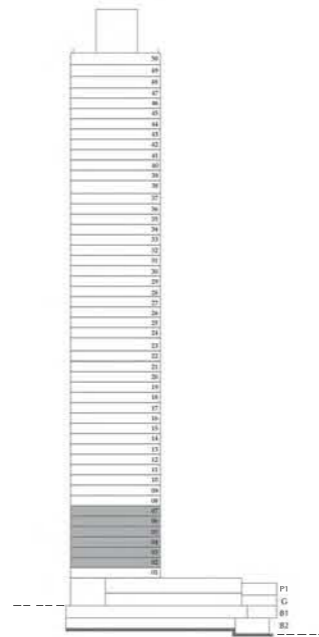
LEVEL 02 - 07 UNIT 09

SUITE AREA	1,474.33 SQ. FT.	136.97 SQ .M.
BALCONY AREA	371.68 SQ. FT.	34.53 SQ .M.
TOTAL AREA	1,846.01 SQ. FT.	171.50 SQ .M.

KEY PLAN



KEY SECTION



FLOOR PLAN 1. All dimensions are in imperial and metric, and measured from finish to finish excluding construction tolerances. 2. All materials, dimesions, and drawings are approximately only. Information is subject to change without notice, at developer's absolute discretion. 4. Actual area may vary from the stated area. 5. Drawings not to scale. 6. All images used are for illustrative purposes only and do not represent the actual size, features, specifications, fittings, and furnishings. 7. The developer reserves the right to make revisions / alterations, at it's absolute discretion, without any liability whatsoever.

CREEK WATERS

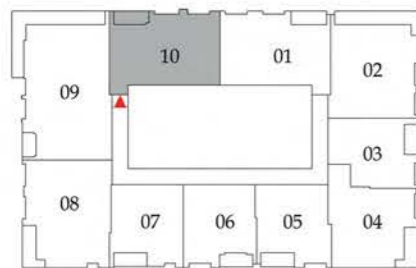
DUBAI CREEK HARBOUR

2 BEDROOM

LEVEL 02 - 07 UNIT 10

SUITE AREA	1,054.65 SQ. FT.	97.98 SQ .M.
BALCONY AREA	80.19 SQ. FT.	7.45 SQ .M.
TOTAL AREA	1,134.84 SQ. FT.	105.43 SQ .M.

KEY PLAN



KEY SECTION



FLOOR PLAN 1. All dimensions are in imperial and metric, and measured from finish to finish excluding construction tolerances. 2. All materials, dimesions, and drawings are approximately only. Information is subject to change without notice, at developer's absolute discretion. 4. Actual area may vary from the stated area. 5. Drawings not to scale. 6. All images used are for illustrative purposes only and do not represent the actual size, features, specifications, fittings, and furnishings. 7. The developer reserves the right to make revisions / alterations, at it's absolute discretion, without any liability whatsoever.

CREEK WATERS

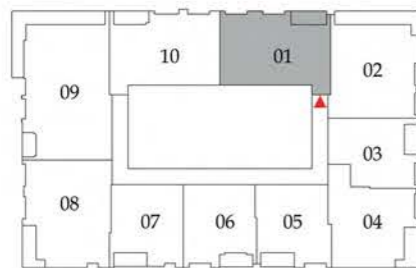
DUBAI CREEK HARBOUR

2 BEDROOM

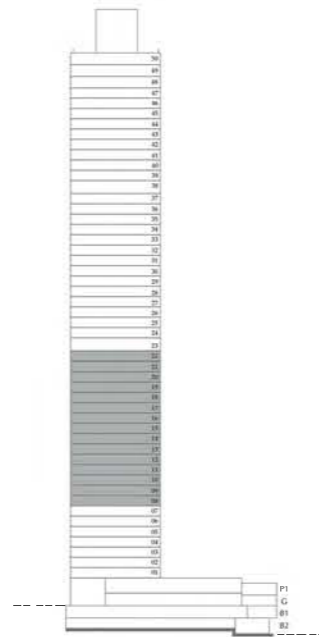
LEVEL 08 - 22 UNIT 01

SUITE AREA	1,054.86 SQ. FT.	98.00 SQ .M.
BALCONY AREA	79.76 SQ. FT.	7.41 SQ .M.
TOTAL AREA	1,134.62 SQ. FT.	105.41 SQ .M.

KEY PLAN



KEY SECTION



FLOOR PLAN 1. All dimensions are in imperial and metric, and measured from finish to finish excluding construction tolerances. 2. All materials, dimensions, and drawings are approximately only. Information is subject to change without notice, at developer's absolute discretion. 4. Actual area may vary from the stated area. 5. Drawings not to scale. 6. All images used are for illustrative purposes only and do not represent the actual size, features, specifications, fittings, and furnishings. 7. The developer reserves the right to make revisions / alterations, at its absolute discretion, without any liability whatsoever.

CREEK WATERS

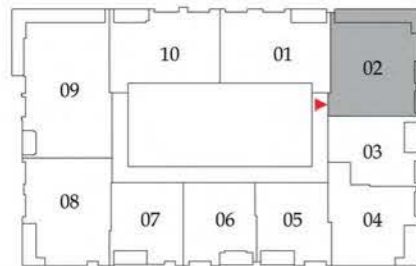
DUBAI CREEK HARBOUR

2 BEDROOM

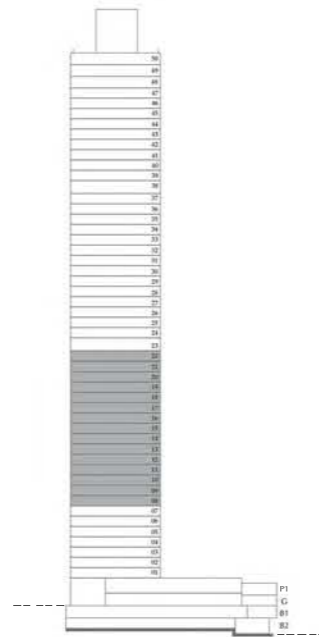
LEVEL 08 - 22 UNIT 02

SUITE AREA	1,061.64 SQ. FT.	98.63 SQ .M.
BALCONY AREA	179.54 SQ. FT.	16.68 SQ .M.
TOTAL AREA	1,241.19 SQ. FT.	115.31 SQ .M.

KEY PLAN



KEY SECTION



FLOOR PLAN 1. All dimensions are in imperial and metric, and measured from finish to finish excluding construction tolerances. 2. All materials, dimensions, and drawings are approximately only. Information is subject to change without notice, at developer's absolute discretion. 4. Actual area may vary from the stated area. 5. Drawings not to scale. 6. All images used are for illustrative purposes only and do not represent the actual size, features, specifications, fittings, and furnishings. 7. The developer reserves the right to make revisions / alterations, at its absolute discretion, without any liability whatsoever.

CREEK WATERS

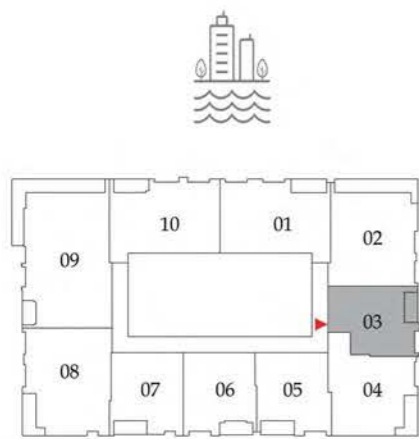
DUBAI CREEK HARBOUR

1 BEDROOM

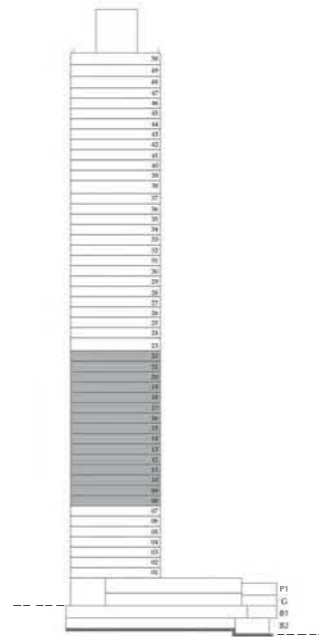
LEVEL 08 - 22 UNIT 03

SUITE AREA	683.62 SQ. FT.	63.51 SQ .M.
BALCONY AREA	73.19 SQ. FT.	6.80 SQ .M.
TOTAL AREA	756.81 SQ. FT.	70.31 SQ .M.

KEY PLAN



KEY SECTION



FLOOR PLAN 1. All dimensions are in imperial and metric, and measured from finish to finish excluding construction tolerances. 2. All materials, dimensions, and drawings are approximately only. Information is subject to change without notice, at developer's absolute discretion. 4. Actual area may vary from the stated area. 5. Drawings not to scale. 6. All images used are for illustrative purposes only and do not represent the actual size, features, specifications, fittings, and furnishings. 7. The developer reserves the right to make revisions / alterations, at its absolute discretion, without any liability whatsoever.

CREEK WATERS

DUBAI CREEK HARBOUR

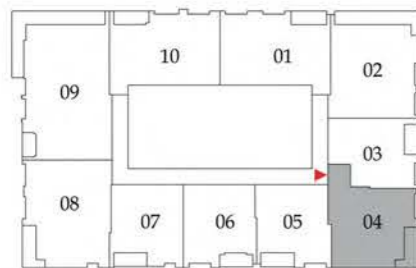
1 BEDROOM

LEVEL 08 - 22 UNIT 04

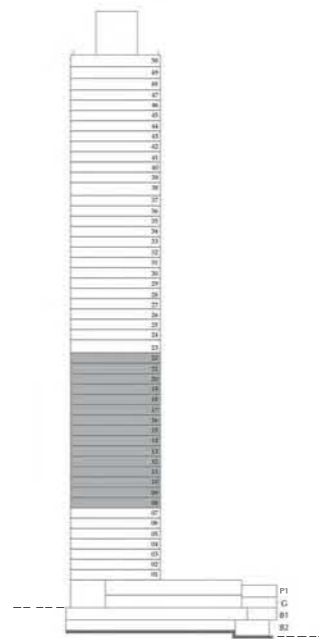
SUITE AREA	826.13 SQ. FT.	76.75 SQ .M.
BALCONY AREA	96.44 SQ. FT.	8.96 SQ .M.
TOTAL AREA	922.57 SQ. FT.	85.71 SQ .M.



KEY PLAN



KEY SECTION



FLOOR PLAN 1. All dimensions are in imperial and metric, and measured from finish to finish excluding construction tolerances. 2. All materials, dimensions, and drawings are approximately only. Information is subject to change without notice, at developer's absolute discretion. 4. Actual area may vary from the stated area. 5. Drawings not to scale. 6. All images used are for illustrative purposes only and do not represent the actual size, features, specifications, fittings, and furnishings. 7. The developer reserves the right to make revisions / alterations, at its absolute discretion, without any liability whatsoever.

CREEK WATERS

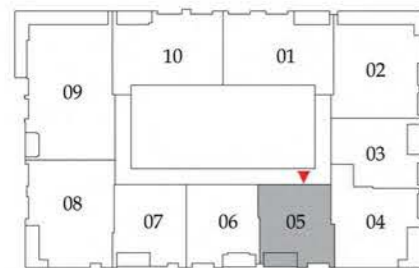
DUBAI CREEK HARBOUR

1 BEDROOM

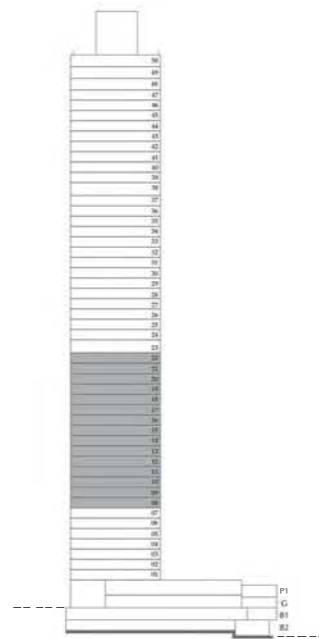
LEVEL 08 - 22 UNIT 05

SUITE AREA	698.15 SQ. FT.	64.86 SQ .M.
BALCONY AREA	78.15 SQ. FT.	7.26 SQ .M.
TOTAL AREA	776.29 SQ. FT.	72.12 SQ .M.

KEY PLAN



KEY SECTION



FLOOR PLAN 1. All dimensions are in imperial and metric, and measured from finish to finish excluding construction tolerances. 2. All materials, dimesions, and drawings are approximately only. Information is subject to change without notice, at developer's absolute discretion. 4. Actual area may vary from the stated area. 5. Drawings not to scale. 6. All images used are for illustrative purposes only and do not represent the actual size, features, specifications, fittings, and furnishings. 7. The developer reserves the right to make revisions / alterations, at it's absolute discretion, without any liability whatsoever.

CREEK WATERS

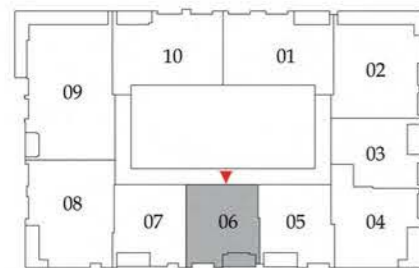
DUBAI CREEK HARBOUR

1 BEDROOM

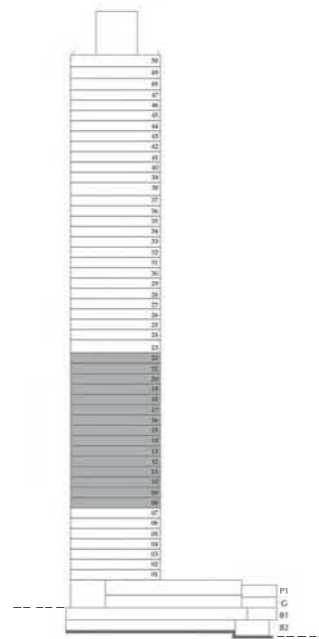
LEVEL 08 - 22 UNIT 06

SUITE AREA	674.57 SQ. FT.	62.67 SQ .M.
BALCONY AREA	78.90 SQ. FT.	7.33 SQ .M.
TOTAL AREA	753.47 SQ. FT.	70.00 SQ .M.

KEY PLAN



KEY SECTION



FLOOR PLAN 1. All dimensions are in imperial and metric, and measured from finish to finish excluding construction tolerances. 2. All materials, dimensions, and drawings are approximately only. Information is subject to change without notice, at developer's absolute discretion. 4. Actual area may vary from the stated area. 5. Drawings not to scale. 6. All images used are for illustrative purposes only and do not represent the actual size, features, specifications, fittings, and furnishings. 7. The developer reserves the right to make revisions / alterations, at its absolute discretion, without any liability whatsoever.

CREEK WATERS

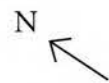
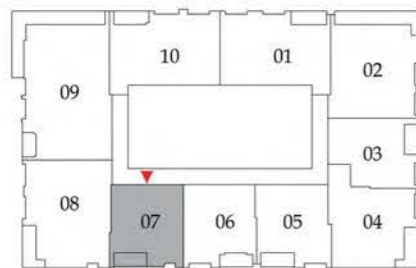
DUBAI CREEK HARBOUR

1 BEDROOM

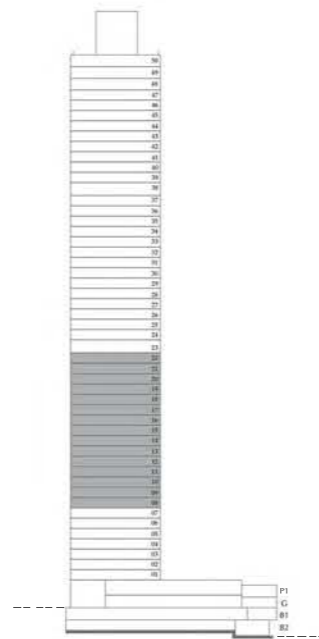
LEVEL 08 - 22 UNIT 07

SUITE AREA	677.91 SQ. FT.	62.98 SQ .M.
BALCONY AREA	79.11 SQ. FT.	7.35 SQ .M.
TOTAL AREA	757.03 SQ. FT.	70.33 SQ .M.

KEY PLAN



KEY SECTION



FLOOR PLAN 1. All dimensions are in imperial and metric, and measured from finish to finish excluding construction tolerances. 2. All materials, dimesions, and drawings are approximately only. Information is subject to change without notice, at developer's absolute discretion. 4. Actual area may vary from the stated area. 5. Drawings not to scale. 6. All images used are for illustrative purposes only and do not represent the actual size, features, specifications, fittings, and furnishings. 7. The developer reserves the right to make revisions / alterations, at it's absolute discretion, without any liability whatsoever.

CREEK WATERS

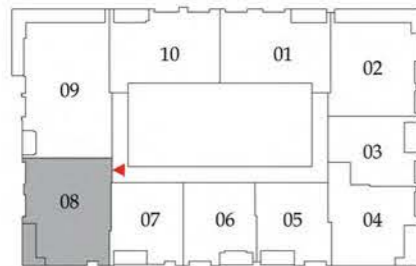
DUBAI CREEK HARBOUR

2 BEDROOM

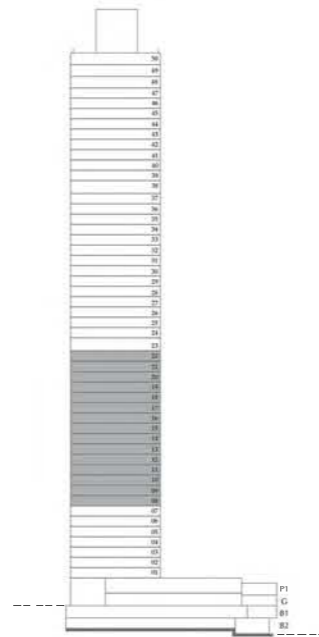
LEVEL 08 - 22 UNIT 08

SUITE AREA	1,112.77 SQ. FT.	103.38 SQ .M.
BALCONY AREA	99.89 SQ. FT.	9.28 SQ .M.
TOTAL AREA	1,212.66 SQ. FT.	112.66 SQ .M.

KEY PLAN



KEY SECTION



FLOOR PLAN 1. All dimensions are in imperial and metric, and measured from finish to finish excluding construction tolerances. 2. All materials, dimesions, and drawings are approximately only. Information is subject to change without notice, at developer's absolute discretion. 4. Actual area may vary from the stated area. 5. Drawings not to scale. 6. All images used are for illustrative purposes only and do not represent the actual size, features, specifications, fittings, and furnishings. 7. The developer reserves the right to make revisions / alterations, at it's absolute discretion, without any liability whatsoever.

CREEK WATERS

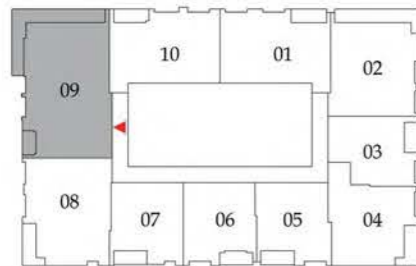
DUBAI CREEK HARBOUR

3 BEDROOM

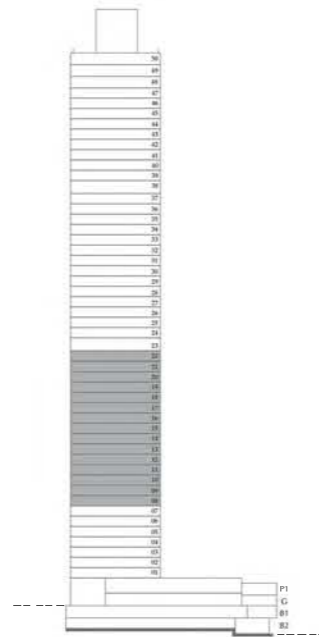
LEVEL 08 - 22 UNIT 09

SUITE AREA	1,472.83 SQ. FT.	136.83 SQ .M.
BALCONY AREA	373.40 SQ. FT.	34.69 SQ .M.
TOTAL AREA	1,846.23 SQ. FT.	171.52 SQ .M.

KEY PLAN



KEY SECTION



FLOOR PLAN 1. All dimensions are in imperial and metric, and measured from finish to finish excluding construction tolerances. 2. All materials, dimesions, and drawings are approximately only. Information is subject to change without notice, at developer's absolute discretion. 4. Actual area may vary from the stated area. 5. Drawings not to scale. 6. All images used are for illustrative purposes only and do not represent the actual size, features, specifications, fittings, and furnishings. 7. The developer reserves the right to make revisions / alterations, at it's absolute discretion, without any liability whatsoever.

CREEK WATERS

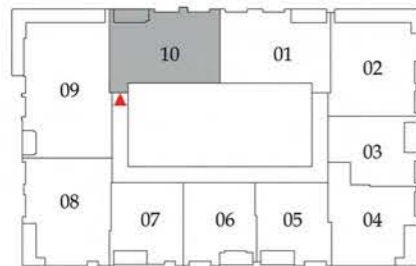
DUBAI CREEK HARBOUR

2 BEDROOM

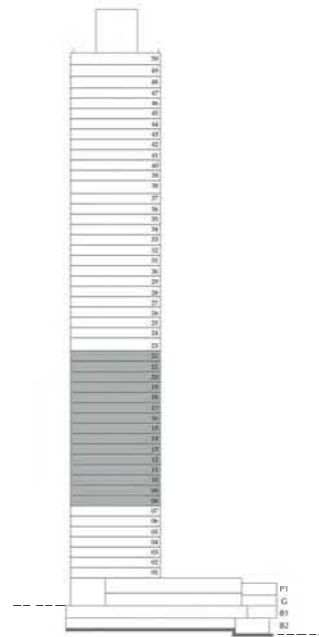
LEVEL 08 - 22 UNIT 10

SUITE AREA	1,054.65 SQ. FT.	97.98 SQ .M.
BALCONY AREA	80.19 SQ. FT.	7.45 SQ .M.
TOTAL AREA	1,134.84 SQ. FT.	105.43 SQ .M.

KEY PLAN



KEY SECTION



FLOOR PLAN 1. All dimensions are in imperial and metric, and measured from finish to finish excluding construction tolerances. 2. All materials, dimesions, and drawings are approximately only. Information is subject to change without notice, at developer's absolute discretion. 4. Actual area may vary from the stated area. 5. Drawings not to scale. 6. All images used are for illustrative purposes only and do not represent the actual size, features, specifications, fittings, and furnishings. 7. The developer reserves the right to make revisions / alterations, at it's absolute discretion, without any liability whatsoever.

CREEK WATERS

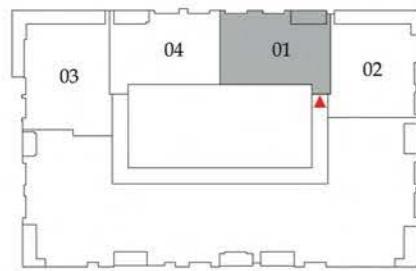
DUBAI CREEK HARBOUR

2 BEDROOM

LEVEL 23 UNIT 01

SUITE AREA	1,054.86 SQ. FT.	98.00 SQ .M.
BALCONY AREA	79.76 SQ. FT.	7.41 SQ .M.
TOTAL AREA	1,134.62 SQ. FT.	105.41 SQ .M.

KEY PLAN



KEY SECTION



FLOOR PLAN 1. All dimensions are in imperial and metric, and measured from finish to finish excluding construction tolerances. 2. All materials, dimensions, and drawings are approximately only. Information is subject to change without notice, at developer's absolute discretion. 4. Actual area may vary from the stated area. 5. Drawings not to scale. 6. All images used are for illustrative purposes only and do not represent the actual size, features, specifications, fittings, and furnishings. 7. The developer reserves the right to make revisions / alterations, at its absolute discretion, without any liability whatsoever.

CREEK WATERS

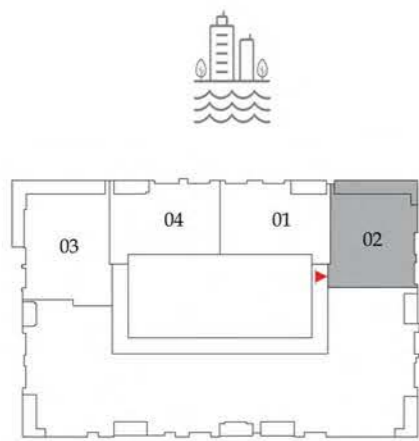
DUBAI CREEK HARBOUR

2 BEDROOM

LEVEL 23 UNIT 02

SUITE AREA	1,063.04 SQ. FT.	98.76 SQ .M.
BALCONY AREA	179.65 SQ. FT.	16.69 SQ .M.
TOTAL AREA	1,242.69 SQ. FT.	115.45 SQ .M.

KEY PLAN



KEY SECTION



FLOOR PLAN 1. All dimensions are in imperial and metric, and measured from finish to finish excluding construction tolerances. 2. All materials, dimensions, and drawings are approximately only. Information is subject to change without notice, at developer's absolute discretion. 4. Actual area may vary from the stated area. 5. Drawings not to scale. 6. All images used are for illustrative purposes only and do not represent the actual size, features, specifications, fittings, and furnishings. 7. The developer reserves the right to make revisions / alterations, at its absolute discretion, without any liability whatsoever.

CREEK WATERS

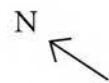
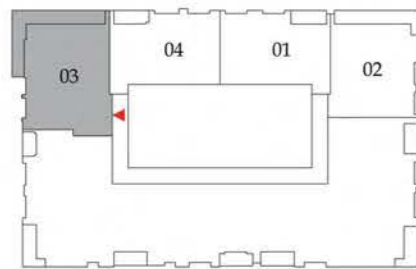
DUBAI CREEK HARBOUR

2 BEDROOM

LEVEL 23 UNIT 03

SUITE AREA	1,181.12 SQ. FT.	109.73 SQ .M.
BALCONY AREA	310.75 SQ. FT.	28.87 SQ .M.
TOTAL AREA	1,491.88 SQ. FT.	138.60 SQ .M.

KEY PLAN



KEY SECTION



FLOOR PLAN 1. All dimensions are in imperial and metric, and measured from finish to finish excluding construction tolerances. 2. All materials, dimesions, and drawings are approximately only. Information is subject to change without notice, at developer's absolute discretion. 4. Actual area may vary from the stated area. 5. Drawings not to scale. 6. All images used are for illustrative purposes only and do not represent the actual size, features, specifications, fittings, and furnishings. 7. The developer reserves the right to make revisions / alterations, at it's absolute discretion, without any liability whatsoever.

CREEK WATERS

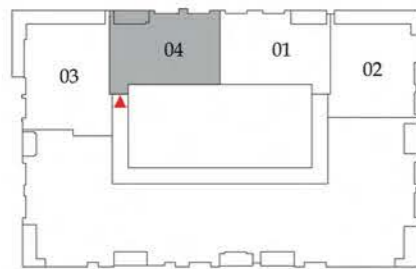
DUBAI CREEK HARBOUR

2 BEDROOM

LEVEL 23 UNIT 04

SUITE AREA	1,054.65 SQ. FT.	97.98 SQ .M.
BALCONY AREA	80.19 SQ. FT.	7.45 SQ .M.
TOTAL AREA	1,134.84 SQ. FT.	105.43 SQ .M.

KEY PLAN



KEY SECTION



FLOOR PLAN 1. All dimensions are in imperial and metric, and measured from finish to finish excluding construction tolerances. 2. All materials, dimesions, and drawings are approximately only. Information is subject to change without notice, at developer's absolute discretion. 4. Actual area may vary from the stated area. 5. Drawings not to scale. 6. All images used are for illustrative purposes only and do not represent the actual size, features, specifications, fittings, and furnishings. 7. The developer reserves the right to make revisions / alterations, at it's absolute discretion, without any liability whatsoever.

CREEK WATERS

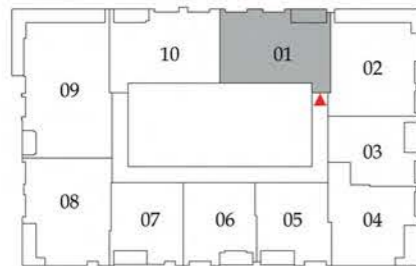
DUBAI CREEK HARBOUR

2 BEDROOM

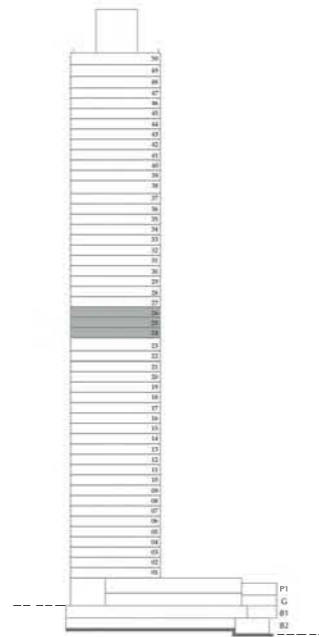
LEVEL 24 - 26 UNIT 01

SUITE AREA	1,054.86 SQ. FT.	98.00 SQ .M.
BALCONY AREA	79.76 SQ. FT.	7.41 SQ .M.
TOTAL AREA	1,134.62 SQ. FT.	105.41 SQ .M.

KEY PLAN



KEY SECTION



FLOOR PLAN 1. All dimensions are in imperial and metric, and measured from finish to finish excluding construction tolerances. 2. All materials, dimensions, and drawings are approximately only. Information is subject to change without notice, at developer's absolute discretion. 4. Actual area may vary from the stated area. 5. Drawings not to scale. 6. All images used are for illustrative purposes only and do not represent the actual size, features, specifications, fittings, and furnishings. 7. The developer reserves the right to make revisions / alterations, at its absolute discretion, without any liability whatsoever.

CREEK WATERS

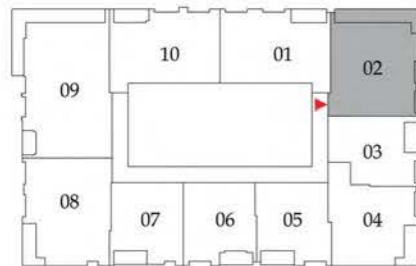
DUBAI CREEK HARBOUR

2 BEDROOM

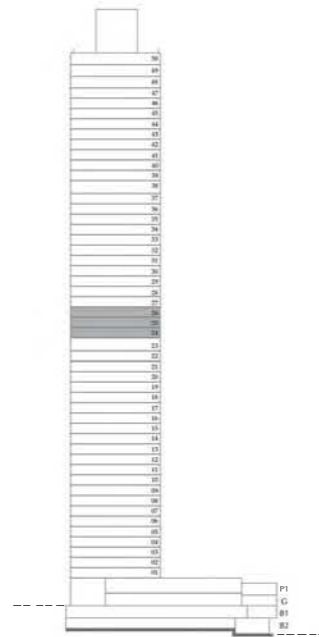
LEVEL 24 - 26 UNIT 02

SUITE AREA	1,061.64 SQ. FT.	98.63 SQ .M.
BALCONY AREA	179.65 SQ. FT.	16.69 SQ .M.
TOTAL AREA	1,241.29 SQ. FT.	115.32 SQ .M.

KEY PLAN



KEY SECTION



FLOOR PLAN 1. All dimensions are in imperial and metric, and measured from finish to finish excluding construction tolerances. 2. All materials, dimensions, and drawings are approximately only. Information is subject to change without notice, at developer's absolute discretion. 4. Actual area may vary from the stated area. 5. Drawings not to scale. 6. All images used are for illustrative purposes only and do not represent the actual size, features, specifications, fittings, and furnishings. 7. The developer reserves the right to make revisions / alterations, at its absolute discretion, without any liability whatsoever.

CREEK WATERS

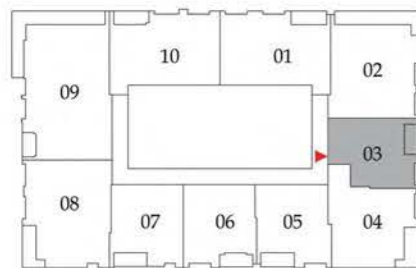
DUBAI CREEK HARBOUR

1 BEDROOM

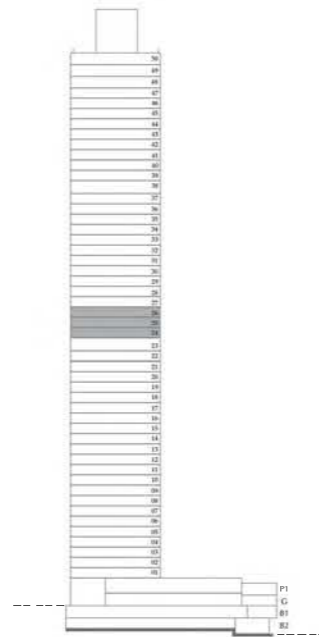
LEVEL 24 - 26 UNIT 03

SUITE AREA	683.51 SQ. FT.	63.50 SQ .M.
BALCONY AREA	73.19 SQ. FT.	6.80 SQ .M.
TOTAL AREA	756.70 SQ. FT.	70.30 SQ .M.

KEY PLAN



KEY SECTION



FLOOR PLAN 1. All dimensions are in imperial and metric, and measured from finish to finish excluding construction tolerances. 2. All materials, dimensions, and drawings are approximately only. Information is subject to change without notice, at developer's absolute discretion. 4. Actual area may vary from the stated area. 5. Drawings not to scale. 6. All images used are for illustrative purposes only and do not represent the actual size, features, specifications, fittings, and furnishings. 7. The developer reserves the right to make revisions / alterations, at its absolute discretion, without any liability whatsoever.

CREEK WATERS

DUBAI CREEK HARBOUR

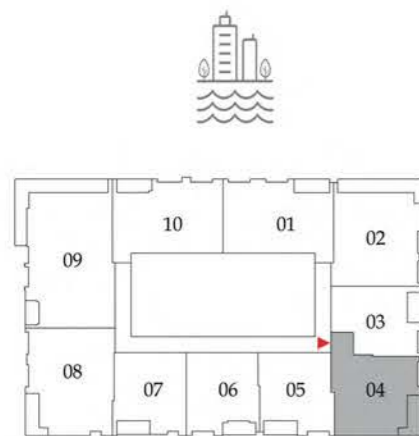
1 BEDROOM

LEVEL 24 - 26 UNIT 04

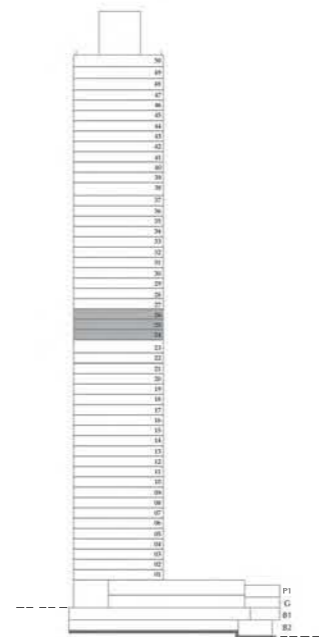
SUITE AREA	825.48 SQ. FT.	76.69 SQ .M.
BALCONY AREA	96.44 SQ. FT.	8.96 SQ .M.
TOTAL AREA	921.93 SQ. FT.	85.65 SQ .M.



KEY PLAN



KEY SECTION



FLOOR PLAN 1. All dimensions are in imperial and metric, and measured from finish to finish excluding construction tolerances. 2. All materials, dimesions, and drawings are approximately only. Information is subject to change without notice, at developer's absolute discretion. 4. Actual area may vary from the stated area. 5. Drawings not to scale. 6. All images used are for illustrative purposes only and do not represent the actual size, features, specifications, fittings, and furnishings. 7. The developer reserves the right to make revisions / alterations, at it's absolute discretion, without any liability whatsoever.

CREEK WATERS

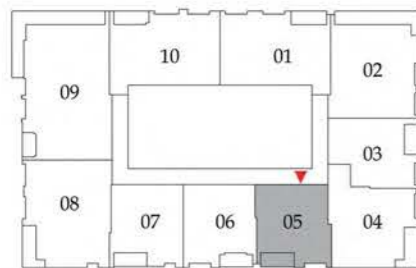
DUBAI CREEK HARBOUR

1 BEDROOM

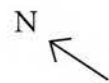
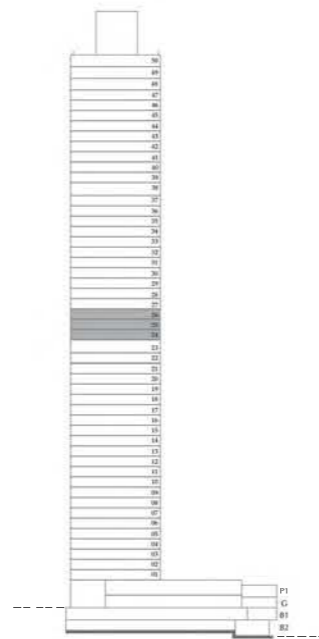
LEVEL 24 - 26 UNIT 05

SUITE AREA	702.78 SQ. FT.	65.29 SQ .M.
BALCONY AREA	78.15 SQ. FT.	7.26 SQ .M.
TOTAL AREA	780.92 SQ. FT.	72.55 SQ .M.

KEY PLAN



KEY SECTION



FLOOR PLAN 1. All dimensions are in imperial and metric, and measured from finish to finish excluding construction tolerances. 2. All materials, dimesions, and drawings are approximately only. Information is subject to change without notice, at developer's absolute discretion. 4. Actual area may vary from the stated area. 5. Drawings not to scale. 6. All images used are for illustrative purposes only and do not represent the actual size, features, specifications, fittings, and furnishings. 7. The developer reserves the right to make revisions / alterations, at it's absolute discretion, without any liability whatsoever.

CREEK WATERS

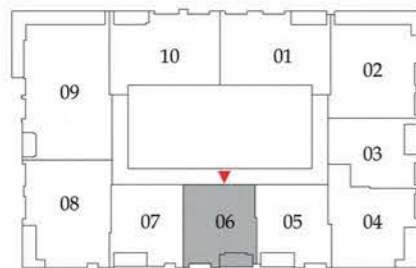
DUBAI CREEK HARBOUR

1 BEDROOM

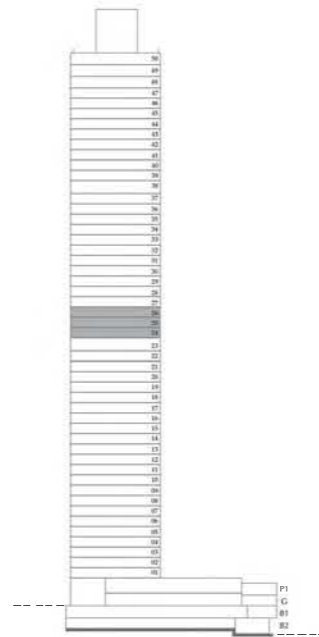
LEVEL 24 - 26 UNIT 06

SUITE AREA	674.57 SQ. FT.	62.67 SQ .M.
BALCONY AREA	78.90 SQ. FT.	7.33 SQ .M.
TOTAL AREA	753.47 SQ. FT.	70.00 SQ .M.

KEY PLAN



KEY SECTION



FLOOR PLAN 1. All dimensions are in imperial and metric, and measured from finish to finish excluding construction tolerances. 2. All materials, dimensions, and drawings are approximately only. Information is subject to change without notice, at developer's absolute discretion. 4. Actual area may vary from the stated area. 5. Drawings not to scale. 6. All images used are for illustrative purposes only and do not represent the actual size, features, specifications, fittings, and furnishings. 7. The developer reserves the right to make revisions / alterations, at its absolute discretion, without any liability whatsoever.

CREEK WATERS

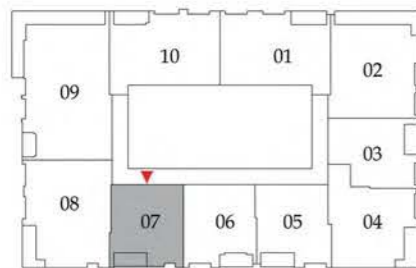
DUBAI CREEK HARBOUR

1 BEDROOM

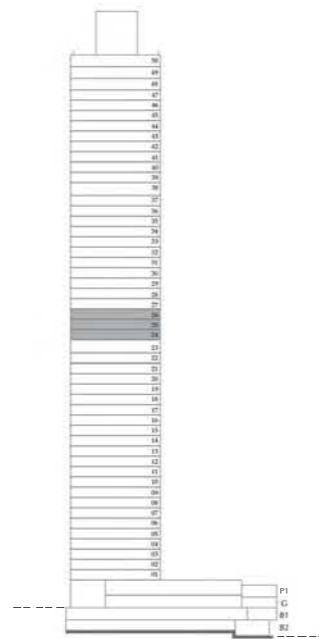
LEVEL 24 - 26 UNIT 07

SUITE AREA	687.92 SQ. FT.	63.91 SQ .M.
BALCONY AREA	79.01 SQ. FT.	7.34 SQ .M.
TOTAL AREA	766.93 SQ. FT.	71.25 SQ .M.

KEY PLAN



KEY SECTION



FLOOR PLAN 1. All dimensions are in imperial and metric, and measured from finish to finish excluding construction tolerances. 2. All materials, dimensions, and drawings are approximately only. Information is subject to change without notice, at developer's absolute discretion. 4. Actual area may vary from the stated area. 5. Drawings not to scale. 6. All images used are for illustrative purposes only and do not represent the actual size, features, specifications, fittings, and furnishings. 7. The developer reserves the right to make revisions / alterations, at its absolute discretion, without any liability whatsoever.

CREEK WATERS

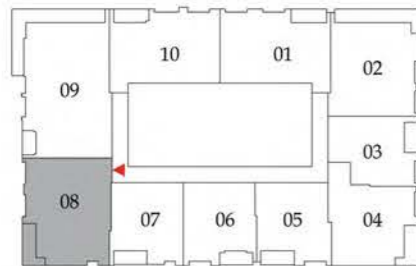
DUBAI CREEK HARBOUR

2 BEDROOM

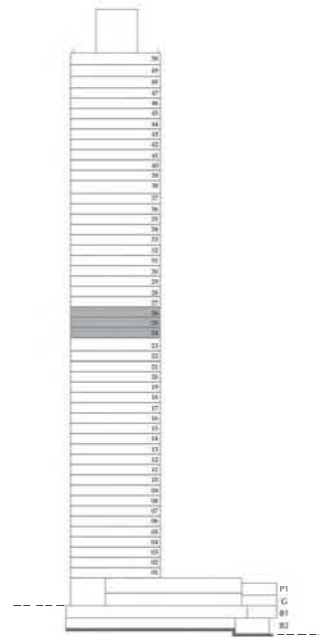
LEVEL 24 - 26 UNIT 08

SUITE AREA	1,100.93 SQ. FT.	102.28 SQ .M.
BALCONY AREA	99.89 SQ. FT.	9.28 SQ .M.
TOTAL AREA	1,200.82 SQ. FT.	111.56 SQ .M.

KEY PLAN



KEY SECTION



FLOOR PLAN 1. All dimensions are in imperial and metric, and measured from finish to finish excluding construction tolerances. 2. All materials, dimesions, and drawings are approximately only. Information is subject to change without notice, at developer's absolute discretion. 4. Actual area may vary from the stated area. 5. Drawings not to scale. 6. All images used are for illustrative purposes only and do not represent the actual size, features, specifications, fittings, and furnishings. 7. The developer reserves the right to make revisions / alterations, at it's absolute discretion, without any liability whatsoever.

CREEK WATERS

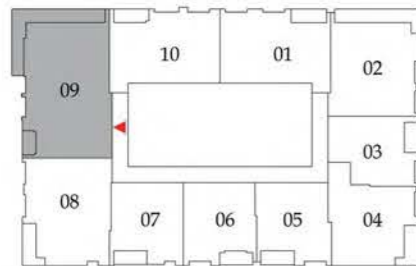
DUBAI CREEK HARBOUR

3 BEDROOM

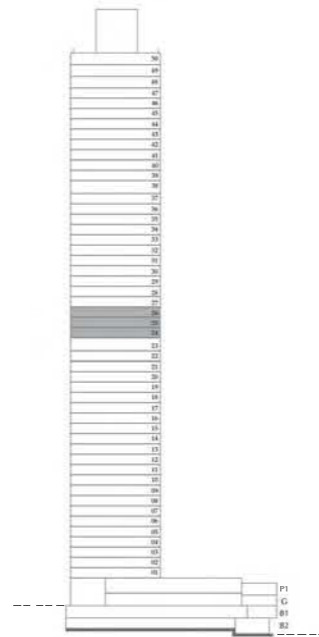
LEVEL 24 - 26 UNIT 09

SUITE AREA	1,472.72 SQ. FT.	136.82 SQ .M.
BALCONY AREA	373.40 SQ. FT.	34.69 SQ .M.
TOTAL AREA	1,846.12 SQ. FT.	171.51 SQ .M.

KEY PLAN



KEY SECTION



FLOOR PLAN 1. All dimensions are in imperial and metric, and measured from finish to finish excluding construction tolerances. 2. All materials, dimesions, and drawings are approximately only. Information is subject to change without notice, at developer's absolute discretion. 4. Actual area may vary from the stated area. 5. Drawings not to scale. 6. All images used are for illustrative purposes only and do not represent the actual size, features, specifications, fittings, and furnishings. 7. The developer reserves the right to make revisions / alterations, at it's absolute discretion, without any liability whatsoever.

CREEK WATERS

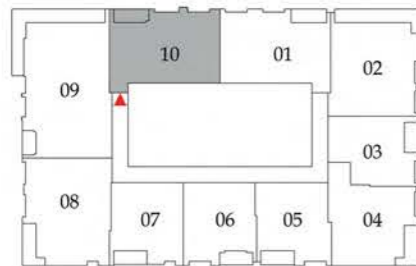
DUBAI CREEK HARBOUR

2 BEDROOM

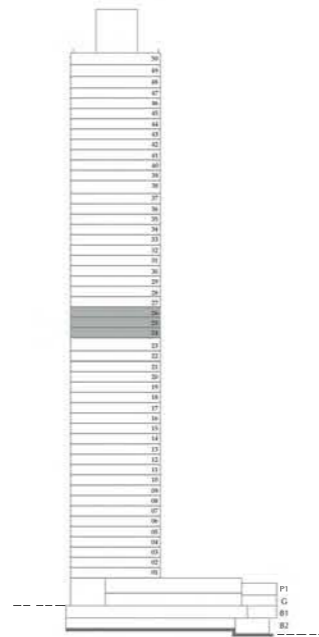
LEVEL 24 - 26 UNIT 10

SUITE AREA	1,054.65 SQ. FT.	97.98 SQ .M.
BALCONY AREA	80.19 SQ. FT.	7.45 SQ .M.
TOTAL AREA	1,134.84 SQ. FT.	105.43 SQ .M.

KEY PLAN



KEY SECTION



FLOOR PLAN 1. All dimensions are in imperial and metric, and measured from finish to finish excluding construction tolerances. 2. All materials, dimesions, and drawings are approximately only. Information is subject to change without notice, at developer's absolute discretion. 4. Actual area may vary from the stated area. 5. Drawings not to scale. 6. All images used are for illustrative purposes only and do not represent the actual size, features, specifications, fittings, and furnishings. 7. The developer reserves the right to make revisions / alterations, at it's absolute discretion, without any liability whatsoever.

CREEK WATERS

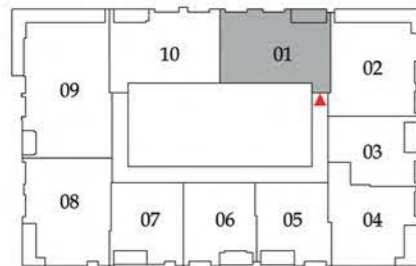
DUBAI CREEK HARBOUR

2 BEDROOM

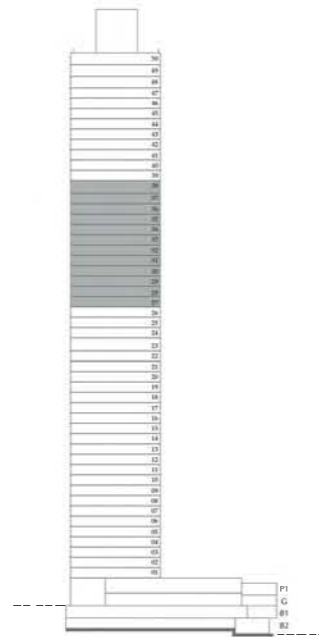
LEVEL 27 - 38 UNIT 01

SUITE AREA	1,053.25 SQ. FT.	97.85 SQ .M.
BALCONY AREA	79.76 SQ. FT.	7.41 SQ .M.
TOTAL AREA	1,133.01 SQ. FT.	105.26 SQ .M.

KEY PLAN



KEY SECTION



FLOOR PLAN 1. All dimensions are in imperial and metric, and measured from finish to finish excluding construction tolerances. 2. All materials, dimensions, and drawings are approximately only. Information is subject to change without notice, at developer's absolute discretion. 4. Actual area may vary from the stated area. 5. Drawings not to scale. 6. All images used are for illustrative purposes only and do not represent the actual size, features, specifications, fittings, and furnishings. 7. The developer reserves the right to make revisions / alterations, at its absolute discretion, without any liability whatsoever.

CREEK WATERS

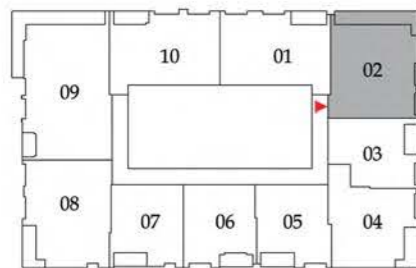
DUBAI CREEK HARBOUR

2 BEDROOM

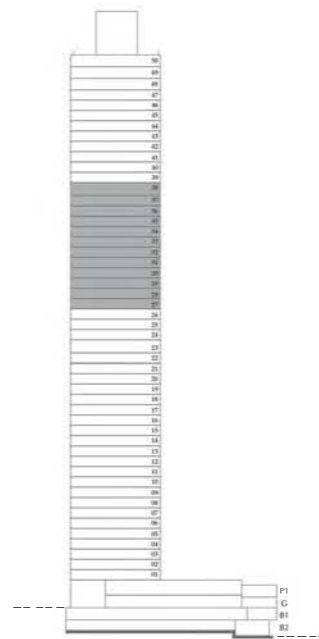
LEVEL 27 - 38 UNIT 02

SUITE AREA	1,061.64 SQ. FT.	98.63 SQ .M.
BALCONY AREA	179.65 SQ. FT.	16.69 SQ .M.
TOTAL AREA	1,241.29 SQ. FT.	115.32 SQ .M.

KEY PLAN



KEY SECTION



FLOOR PLAN 1. All dimensions are in imperial and metric, and measured from finish to finish excluding construction tolerances. 2. All materials, dimensions, and drawings are approximately only. Information is subject to change without notice, at developer's absolute discretion. 4. Actual area may vary from the stated area. 5. Drawings not to scale. 6. All images used are for illustrative purposes only and do not represent the actual size, features, specifications, fittings, and furnishings. 7. The developer reserves the right to make revisions / alterations, at its absolute discretion, without any liability whatsoever.

CREEK WATERS

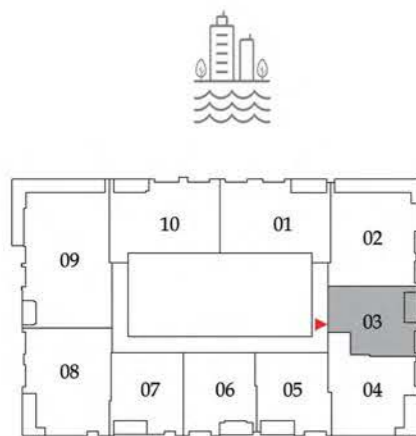
DUBAI CREEK HARBOUR

1 BEDROOM

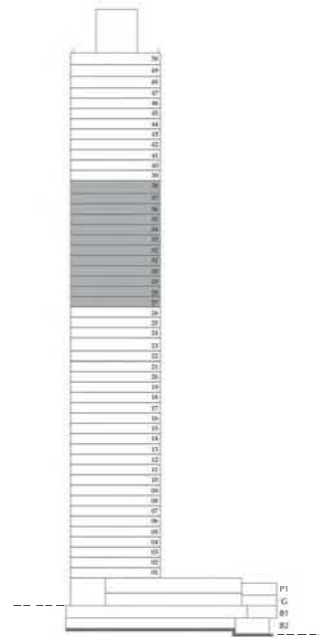
LEVEL 27 - 38 UNIT 03

SUITE AREA	689.32 SQ. FT.	64.04 SQ .M.
BALCONY AREA	73.19 SQ. FT.	6.80 SQ .M.
TOTAL AREA	762.52 SQ. FT.	70.84 SQ .M.

KEY PLAN



KEY SECTION



FLOOR PLAN 1. All dimensions are in imperial and metric, and measured from finish to finish excluding construction tolerances. 2. All materials, dimensions, and drawings are approximately only. Information is subject to change without notice, at developer's absolute discretion. 4. Actual area may vary from the stated area. 5. Drawings not to scale. 6. All images used are for illustrative purposes only and do not represent the actual size, features, specifications, fittings, and furnishings. 7. The developer reserves the right to make revisions / alterations, at its absolute discretion, without any liability whatsoever.

CREEK WATERS

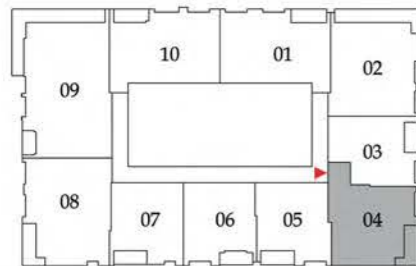
DUBAI CREEK HARBOUR

1 BEDROOM

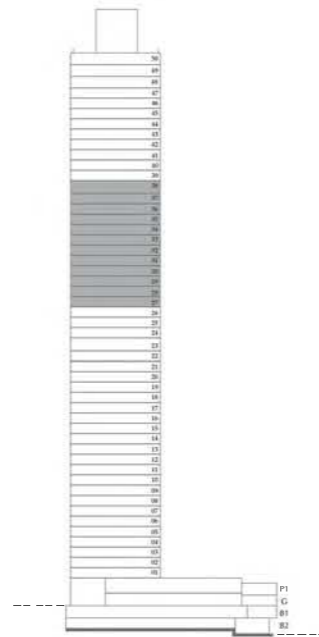
LEVEL 27 - 38 UNIT 04

SUITE AREA	831.40 SQ. FT.	77.24 SQ .M.
BALCONY AREA	96.44 SQ. FT.	8.96 SQ .M.
TOTAL AREA	927.85 SQ. FT.	86.20 SQ .M.

KEY PLAN



KEY SECTION



FLOOR PLAN 1. All dimensions are in imperial and metric, and measured from finish to finish excluding construction tolerances. 2. All materials, dimesions, and drawings are approximately only. Information is subject to change without notice, at developer's absolute discretion. 4. Actual area may vary from the stated area. 5. Drawings not to scale. 6. All images used are for illustrative purposes only and do not represent the actual size, features, specifications, fittings, and furnishings. 7. The developer reserves the right to make revisions / alterations, at it's absolute discretion, without any liability whatsoever.

CREEK WATERS

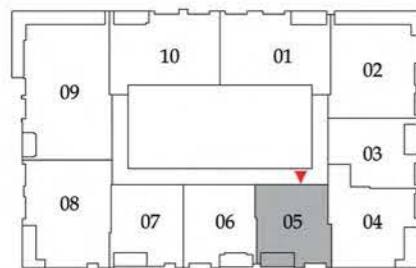
DUBAI CREEK HARBOUR

1 BEDROOM

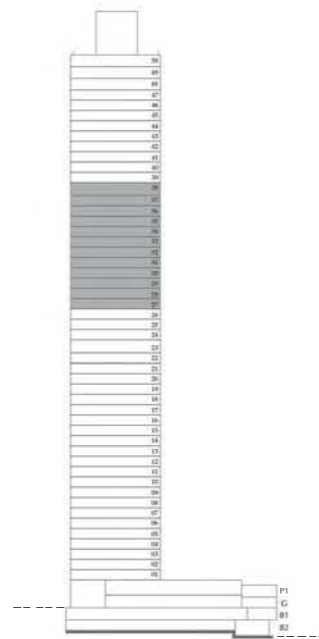
LEVEL 27 - 38 UNIT 05

SUITE AREA	696.64 SQ. FT.	64.72 SQ .M.
BALCONY AREA	78.15 SQ. FT.	7.26 SQ .M.
TOTAL AREA	774.79 SQ. FT.	71.98 SQ .M.

KEY PLAN



KEY SECTION



FLOOR PLAN 1. All dimensions are in imperial and metric, and measured from finish to finish excluding construction tolerances. 2. All materials, dimensions, and drawings are approximately only. Information is subject to change without notice, at developer's absolute discretion. 4. Actual area may vary from the stated area. 5. Drawings not to scale. 6. All images used are for illustrative purposes only and do not represent the actual size, features, specifications, fittings, and furnishings. 7. The developer reserves the right to make revisions / alterations, at its absolute discretion, without any liability whatsoever.

CREEK WATERS

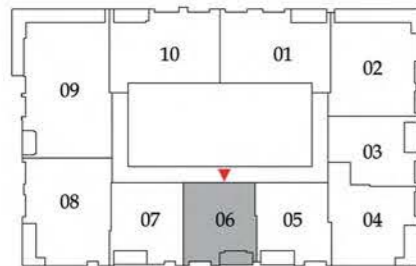
DUBAI CREEK HARBOUR

1 BEDROOM

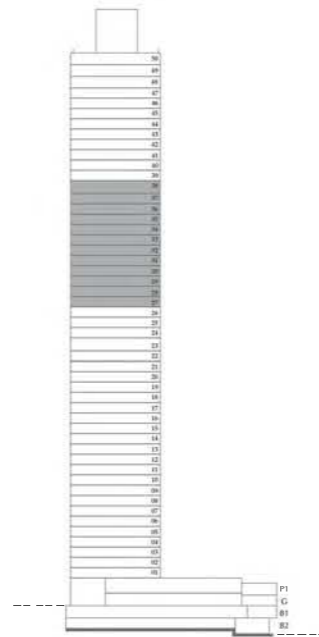
LEVEL 27 - 38 UNIT 06

SUITE AREA	674.57 SQ. FT.	62.67 SQ .M.
BALCONY AREA	78.90 SQ. FT.	7.33 SQ .M.
TOTAL AREA	753.47 SQ. FT.	70.00 SQ .M.

KEY PLAN



KEY SECTION



FLOOR PLAN 1. All dimensions are in imperial and metric, and measured from finish to finish excluding construction tolerances. 2. All materials, dimensions, and drawings are approximately only. Information is subject to change without notice, at developer's absolute discretion. 4. Actual area may vary from the stated area. 5. Drawings not to scale. 6. All images used are for illustrative purposes only and do not represent the actual size, features, specifications, fittings, and furnishings. 7. The developer reserves the right to make revisions / alterations, at its absolute discretion, without any liability whatsoever.

CREEK WATERS

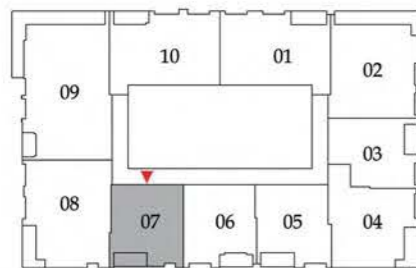
DUBAI CREEK HARBOUR

1 BEDROOM

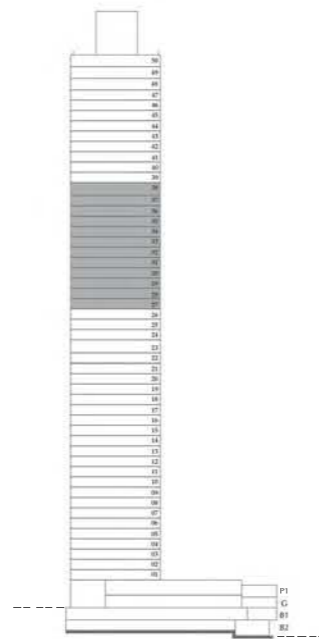
LEVEL 27 - 38 UNIT 07

SUITE AREA	677.91 SQ. FT.	62.98 SQ .M.
BALCONY AREA	79.11 SQ. FT.	7.35 SQ .M.
TOTAL AREA	757.03 SQ. FT.	70.33 SQ .M.

KEY PLAN



KEY SECTION



FLOOR PLAN 1. All dimensions are in imperial and metric, and measured from finish to finish excluding construction tolerances. 2. All materials, dimensions, and drawings are approximately only. Information is subject to change without notice, at developer's absolute discretion. 4. Actual area may vary from the stated area. 5. Drawings not to scale. 6. All images used are for illustrative purposes only and do not represent the actual size, features, specifications, fittings, and furnishings. 7. The developer reserves the right to make revisions / alterations, at its absolute discretion, without any liability whatsoever.

CREEK WATERS

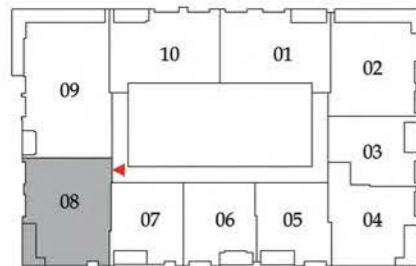
DUBAI CREEK HARBOUR

2 BEDROOM

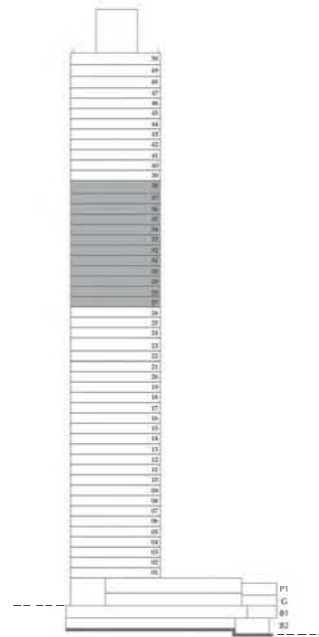
LEVEL 27 - 38 UNIT 08

SUITE AREA	1,116.43 SQ. FT.	103.72 SQ .M.
BALCONY AREA	99.89 SQ. FT.	9.28 SQ .M.
TOTAL AREA	1,216.32 SQ. FT.	113.00 SQ .M.

KEY PLAN



KEY SECTION



FLOOR PLAN 1. All dimensions are in imperial and metric, and measured from finish to finish excluding construction tolerances. 2. All materials, dimensions, and drawings are approximately only. Information is subject to change without notice, at developer's absolute discretion. 4. Actual area may vary from the stated area. 5. Drawings not to scale. 6. All images used are for illustrative purposes only and do not represent the actual size, features, specifications, fittings, and furnishings. 7. The developer reserves the right to make revisions / alterations, at its absolute discretion, without any liability whatsoever.

CREEK WATERS

DUBAI CREEK HARBOUR

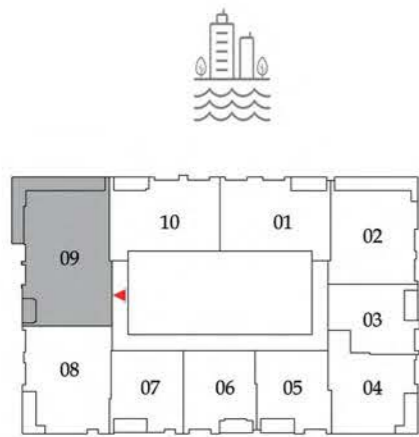
3 BEDROOM

LEVEL 27 - 38 UNIT 09

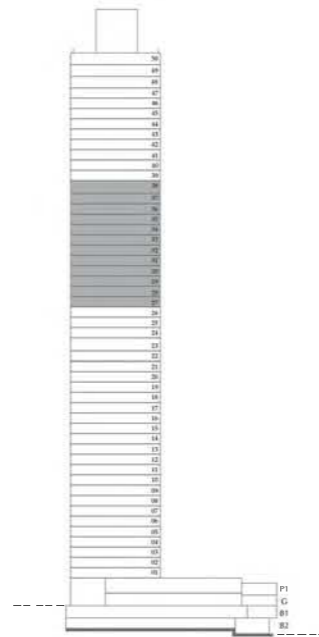
SUITE AREA	1,479.61 SQ. FT.	137.46 SQ .M.
BALCONY AREA	376.84 SQ. FT.	35.01 SQ .M.
TOTAL AREA	1,856.45 SQ. FT.	172.47 SQ .M.



KEY PLAN



KEY SECTION



FLOOR PLAN 1. All dimensions are in imperial and metric, and measured from finish to finish excluding construction tolerances. 2. All materials, dimensions, and drawings are approximately only. Information is subject to change without notice, at developer's absolute discretion. 4. Actual area may vary from the stated area. 5. Drawings not to scale. 6. All images used are for illustrative purposes only and do not represent the actual size, features, specifications, fittings, and furnishings. 7. The developer reserves the right to make revisions / alterations, at its absolute discretion, without any liability whatsoever.

CREEK WATERS

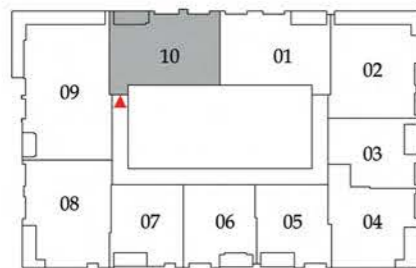
DUBAI CREEK HARBOUR

2 BEDROOM

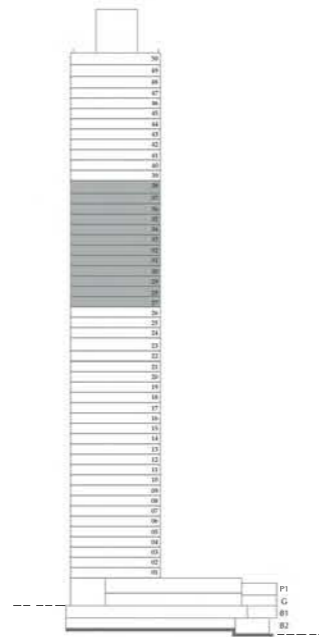
LEVEL 27 - 38 UNIT 10

SUITE AREA	1,050.23 SQ. FT.	97.57 SQ .M.
BALCONY AREA	80.19 SQ. FT.	7.45 SQ .M.
TOTAL AREA	1,130.43 SQ. FT.	105.02 SQ .M.

KEY PLAN



KEY SECTION



FLOOR PLAN 1. All dimensions are in imperial and metric, and measured from finish to finish excluding construction tolerances. 2. All materials, dimensions, and drawings are approximately only. Information is subject to change without notice, at developer's absolute discretion. 4. Actual area may vary from the stated area. 5. Drawings not to scale. 6. All images used are for illustrative purposes only and do not represent the actual size, features, specifications, fittings, and furnishings. 7. The developer reserves the right to make revisions / alterations, at its absolute discretion, without any liability whatsoever.

CREEK WATERS

DUBAI CREEK HARBOUR

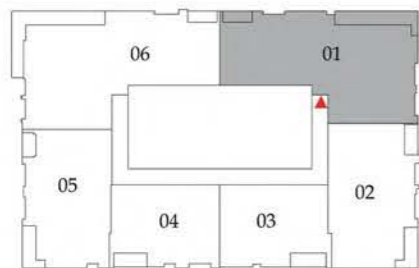
4 BEDROOM

LEVEL 39 - 48 UNIT 01

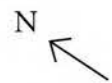
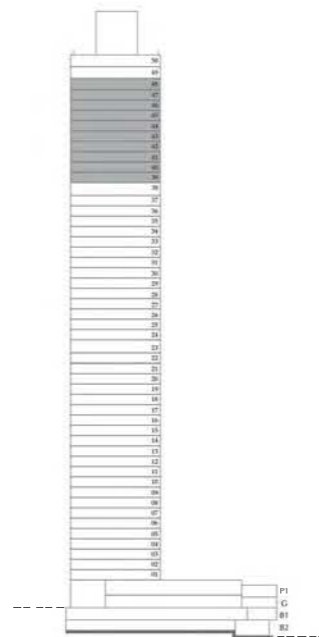
SUITE AREA	2,197.67 SQ. FT.	204.17 SQ .M.
BALCONY AREA	242.83 SQ. FT.	22.56 SQ .M.
TOTAL AREA	2,440.50 SQ. FT.	226.73 SQ .M.



KEY PLAN



KEY SECTION



FLOOR PLAN 1. All dimensions are in imperial and metric, and measured from finish to finish excluding construction tolerances. 2. All materials, dimensions, and drawings are approximately only. Information is subject to change without notice, at developer's absolute discretion. 4. Actual area may vary from the stated area. 5. Drawings not to scale. 6. All images used are for illustrative purposes only and do not represent the actual size, features, specifications, fittings, and furnishings. 7. The developer reserves the right to make revisions / alterations, at its absolute discretion, without any liability whatsoever.

CREEK WATERS

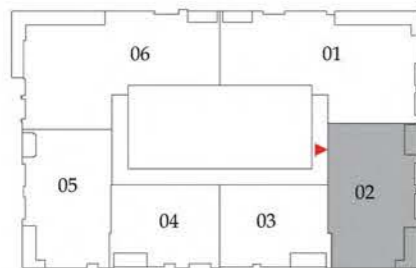
DUBAI CREEK HARBOUR

3 BEDROOM

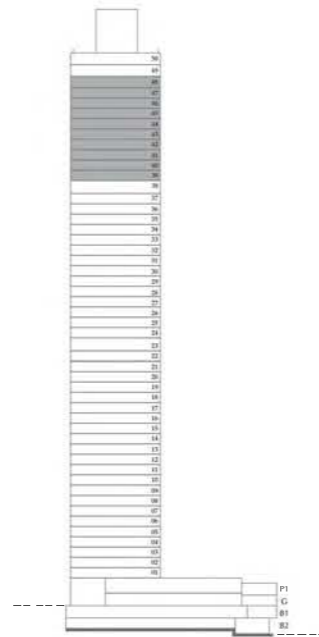
LEVEL 39 - 48 UNIT 02

SUITE AREA	1,479.93 SQ. FT.	137.49 SQ .M.
BALCONY AREA	177.60 SQ. FT.	16.50 SQ .M.
TOTAL AREA	1,657.53 SQ. FT.	153.99 SQ .M.

KEY PLAN



KEY SECTION



FLOOR PLAN 1. All dimensions are in imperial and metric, and measured from finish to finish excluding construction tolerances. 2. All materials, dimensions, and drawings are approximately only. Information is subject to change without notice, at developer's absolute discretion. 4. Actual area may vary from the stated area. 5. Drawings not to scale. 6. All images used are for illustrative purposes only and do not represent the actual size, features, specifications, fittings, and furnishings. 7. The developer reserves the right to make revisions / alterations, at its absolute discretion, without any liability whatsoever.

CREEK WATERS

DUBAI CREEK HARBOUR

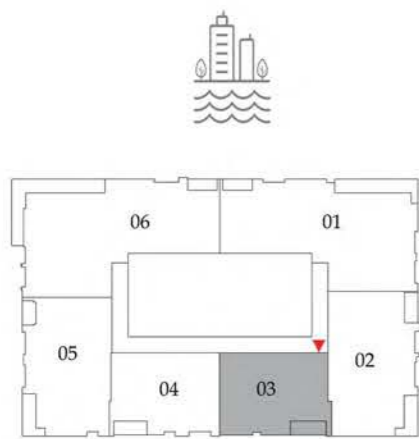
2 BEDROOM

LEVEL 39 - 48 UNIT 03

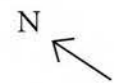
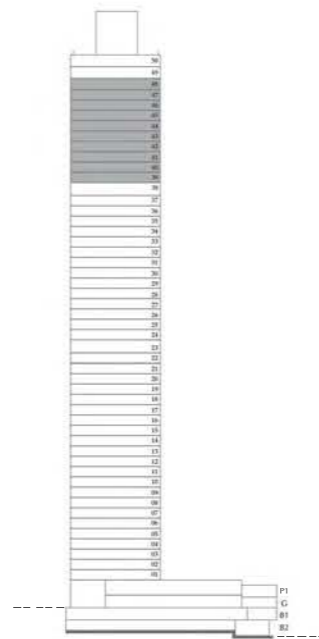
SUITE AREA	1,105.35 SQ. FT.	102.69 SQ .M.
BALCONY AREA	86.76 SQ. FT.	8.06 SQ .M.
TOTAL AREA	1,192.10 SQ. FT.	110.75 SQ .M.



KEY PLAN



KEY SECTION



FLOOR PLAN 1. All dimensions are in imperial and metric, and measured from finish to finish excluding construction tolerances. 2. All materials, dimesions, and drawings are approximately only. Information is subject to change without notice, at developer's absolute discretion. 4. Actual area may vary from the stated area. 5. Drawings not to scale. 6. All images used are for illustrative purposes only and do not represent the actual size, features, specifications, fittings, and furnishings. 7. The developer reserves the right to make revisions / alterations, at it's absolute discretion, without any liability whatsoever.

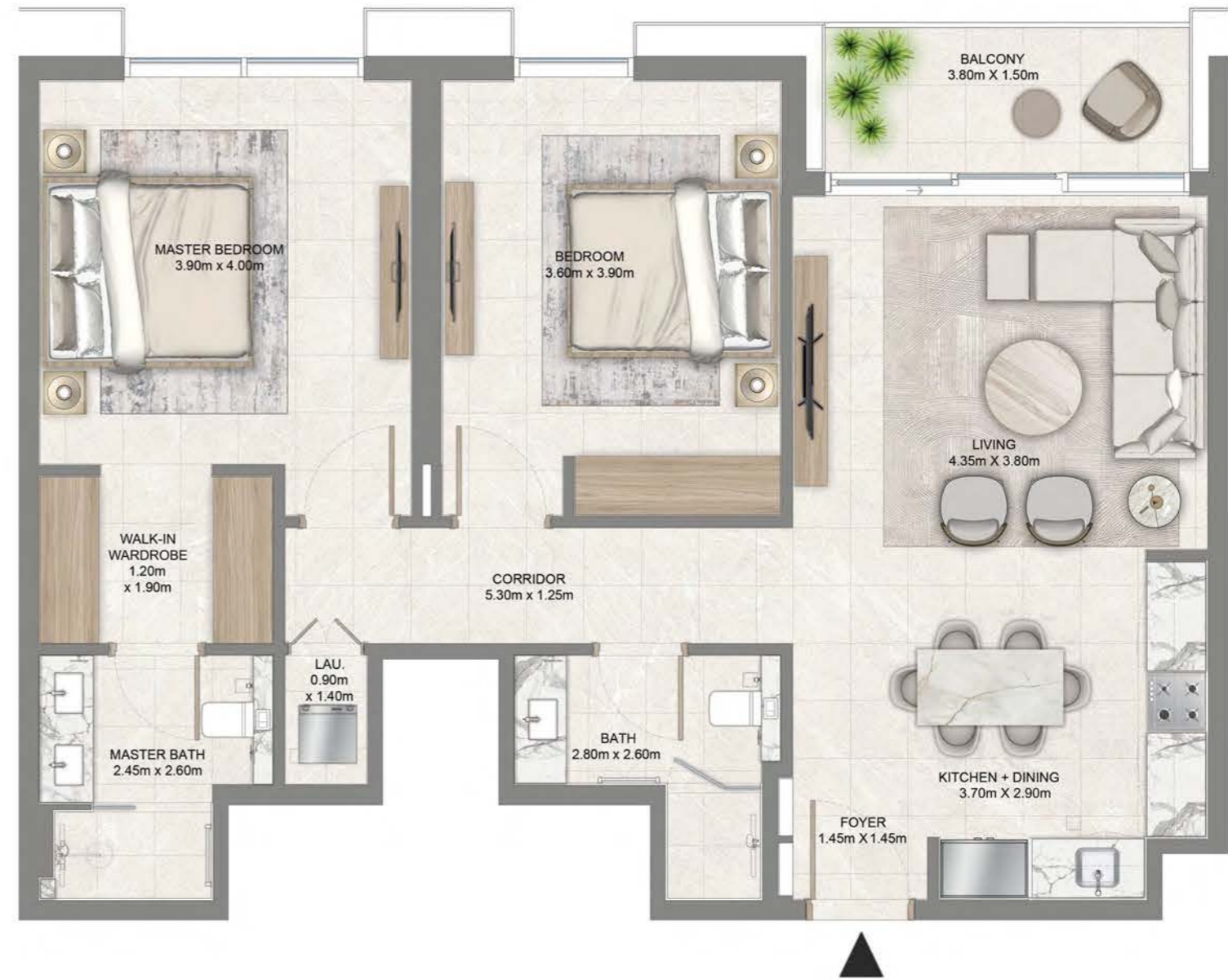
CREEK WATERS

DUBAI CREEK HARBOUR

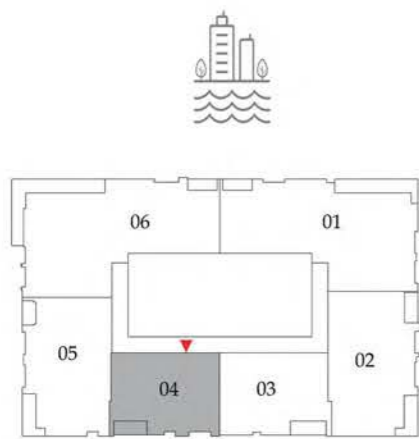
2 BEDROOM

LEVEL 39 - 48 UNIT 04

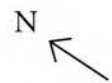
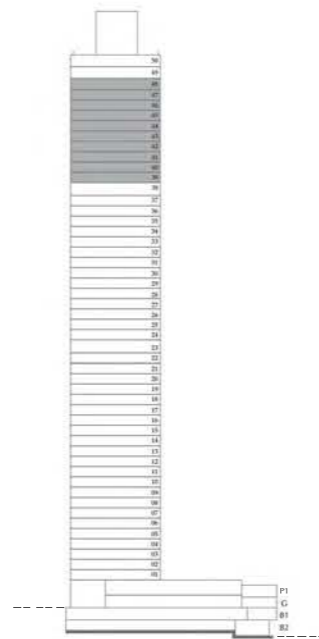
SUITE AREA	1,041.41 SQ. FT.	96.75 SQ .M.
BALCONY AREA	79.22 SQ. FT.	7.36 SQ .M.
TOTAL AREA	1,120.63 SQ. FT.	104.11 SQ .M.



KEY PLAN



KEY SECTION



FLOOR PLAN 1. All dimensions are in imperial and metric, and measured from finish to finish excluding construction tolerances. 2. All materials, dimensions, and drawings are approximately only. Information is subject to change without notice, at developer's absolute discretion. 4. Actual area may vary from the stated area. 5. Drawings not to scale. 6. All images used are for illustrative purposes only and do not represent the actual size, features, specifications, fittings, and furnishings. 7. The developer reserves the right to make revisions / alterations, at its absolute discretion, without any liability whatsoever.

CREEK WATERS

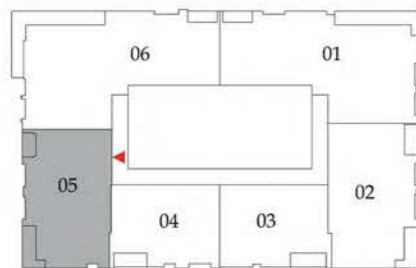
DUBAI CREEK HARBOUR

3 BEDROOM

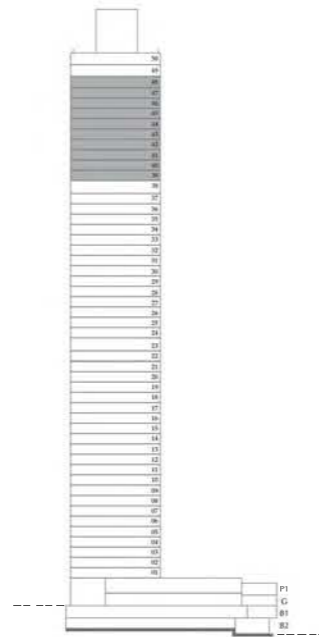
LEVEL 39 - 48 UNIT 05

SUITE AREA	1,435.26 SQ. FT.	133.34 SQ .M.
BALCONY AREA	163.50 SQ. FT.	15.19 SQ .M.
TOTAL AREA	1,598.76 SQ. FT.	148.53 SQ .M.

KEY PLAN



KEY SECTION



FLOOR PLAN 1. All dimensions are in imperial and metric, and measured from finish to finish excluding construction tolerances. 2. All materials, dimensions, and drawings are approximately only. Information is subject to change without notice, at developer's absolute discretion. 4. Actual area may vary from the stated area. 5. Drawings not to scale. 6. All images used are for illustrative purposes only and do not represent the actual size, features, specifications, fittings, and furnishings. 7. The developer reserves the right to make revisions / alterations, at its absolute discretion, without any liability whatsoever.

CREEK WATERS

DUBAI CREEK HARBOUR

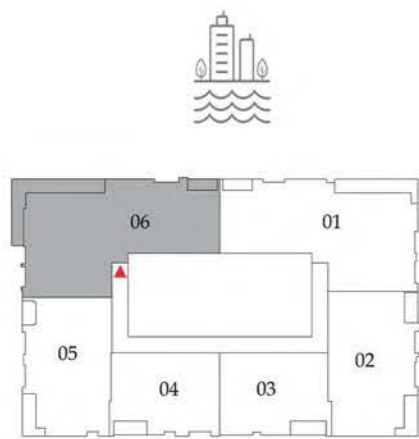
4 BEDROOM

LEVEL 39 - 48 UNIT 06

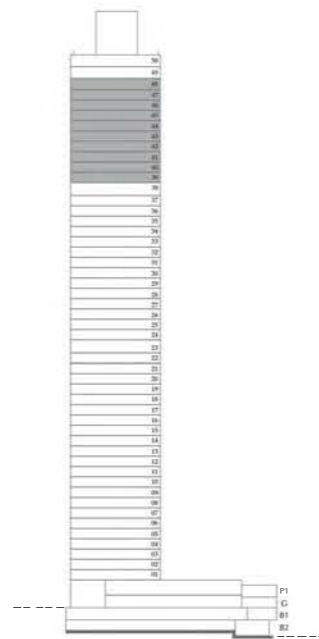
SUITE AREA	2,254.18 SQ. FT.	209.42 SQ .M.
BALCONY AREA	376.84 SQ. FT.	35.01 SQ .M.
TOTAL AREA	2,631.02 SQ. FT.	244.43 SQ .M.



KEY PLAN



KEY SECTION



FLOOR PLAN 1. All dimensions are in imperial and metric, and measured from finish to finish excluding construction tolerances. 2. All materials, dimensions, and drawings are approximately only. Information is subject to change without notice, at developer's absolute discretion. 4. Actual area may vary from the stated area. 5. Drawings not to scale. 6. All images used are for illustrative purposes only and do not represent the actual size, features, specifications, fittings, and furnishings. 7. The developer reserves the right to make revisions / alterations, at its absolute discretion, without any liability whatsoever.

CREEK WATERS

DUBAI CREEK HARBOUR

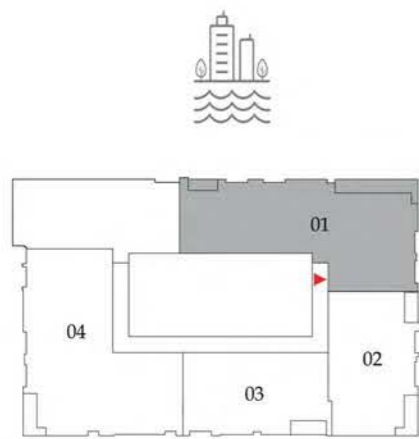
4 BEDROOM

LEVEL 49 UNIT 01

SUITE AREA	2,555.35 SQ. FT.	237.40 SQ .M.
BALCONY AREA	241.87 SQ. FT.	22.47 SQ .M.
TOTAL AREA	2,797.22 SQ. FT.	259.87 SQ .M.



KEY PLAN



KEY SECTION



FLOOR PLAN 1. All dimensions are in imperial and metric, and measured from finish to finish excluding construction tolerances. 2. All materials, dimesions, and drawings are approximately only. Information is subject to change without notice, at developer's absolute discretion. 4. Actual area may vary from the stated area. 5. Drawings not to scale. 6. All images used are for illustrative purposes only and do not represent the actual size, features, specifications, fittings, and furnishings. 7. The developer reserves the right to make revisions / alterations, at it's absolute discretion, without any liability whatsoever.

CREEK WATERS

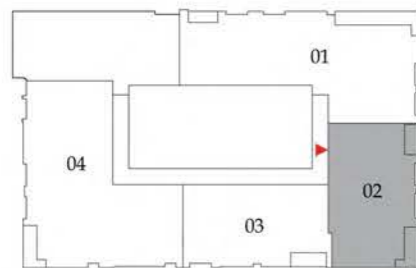
DUBAI CREEK HARBOUR

3 BEDROOM

LEVEL 49 UNIT 02

SUITE AREA	1,484.77 SQ. FT.	137.94 SQ .M.
BALCONY AREA	176.42 SQ. FT.	16.39 SQ .M.
TOTAL AREA	1,661.19 SQ. FT.	154.33 SQ .M.

KEY PLAN



KEY SECTION



FLOOR PLAN 1. All dimensions are in imperial and metric, and measured from finish to finish excluding construction tolerances. 2. All materials, dimensions, and drawings are approximately only. Information is subject to change without notice, at developer's absolute discretion. 4. Actual area may vary from the stated area. 5. Drawings not to scale. 6. All images used are for illustrative purposes only and do not represent the actual size, features, specifications, fittings, and furnishings. 7. The developer reserves the right to make revisions / alterations, at its absolute discretion, without any liability whatsoever.

CREEK WATERS

DUBAI CREEK HARBOUR

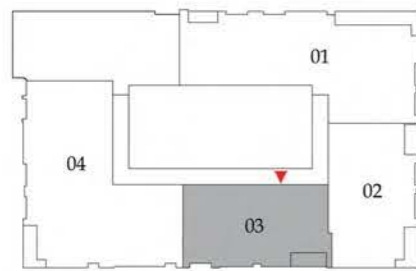
3 BEDROOM

LEVEL 49 UNIT 03

SUITE AREA	1,464.86 SQ. FT.	136.09 SQ .M.
BALCONY AREA	86.76 SQ. FT.	8.06 SQ .M.
TOTAL AREA	1,551.62 SQ. FT.	144.15 SQ .M.



KEY PLAN



KEY SECTION



FLOOR PLAN 1. All dimensions are in imperial and metric, and measured from finish to finish excluding construction tolerances. 2. All materials, dimesions, and drawings are approximately only. Information is subject to change without notice, at developer's absolute discretion. 4. Actual area may vary from the stated area. 5. Drawings not to scale. 6. All images used are for illustrative purposes only and do not represent the actual size, features, specifications, fittings, and furnishings. 7. The developer reserves the right to make revisions / alterations, at it's absolute discretion, without any liability whatsoever.

CREEK WATERS

DUBAI CREEK HARBOUR

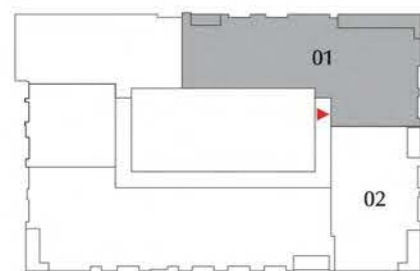
4 BEDROOM

LEVEL 50 UNIT 01

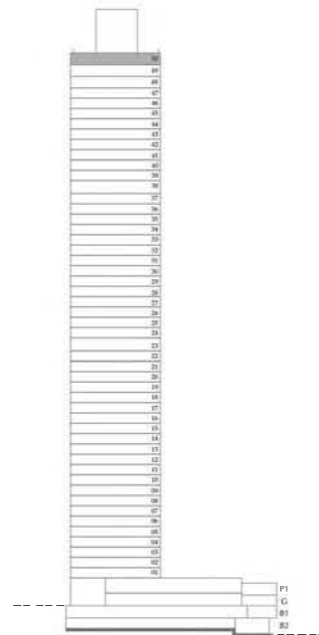
SUITE AREA	2,554.49 SQ. FT.	237.32 SQ .M.
BALCONY AREA	249.62 SQ. FT.	23.19 SQ .M.
TOTAL AREA	2,804.11 SQ. FT.	260.51 SQ .M.



KEY PLAN



KEY SECTION



FLOOR PLAN 1. All dimensions are in imperial and metric, and measured from finish to finish excluding construction tolerances. 2. All materials, dimensions, and drawings are approximately only. Information is subject to change without notice, at developer's absolute discretion. 4. Actual area may vary from the stated area. 5. Drawings not to scale. 6. All images used are for illustrative purposes only and do not represent the actual size, features, specifications, fittings, and furnishings. 7. The developer reserves the right to make revisions / alterations, at its absolute discretion, without any liability whatsoever.

CREEK WATERS

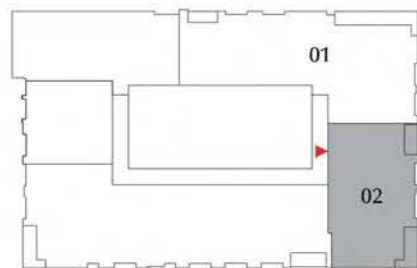
DUBAI CREEK HARBOUR

3 BEDROOM

LEVEL 50 UNIT 02

SUITE AREA	1,483.37 SQ. FT.	137.81 SQ .M.
BALCONY AREA	179.86 SQ. FT.	16.71 SQ .M.
TOTAL AREA	1,663.24 SQ. FT.	154.52 SQ .M.

KEY PLAN



KEY SECTION



FLOOR PLAN 1. All dimensions are in imperial and metric, and measured from finish to finish excluding construction tolerances. 2. All materials, dimesions, and drawings are approximately only. Information is subject to change without notice, at developer's absolute discretion. 4. Actual area may vary from the stated area. 5. Drawings not to scale. 6. All images used are for illustrative purposes only and do not represent the actual size, features, specifications, fittings, and furnishings. 7. The developer reserves the right to make revisions / alterations, at it's absolute discretion, without any liability whatsoever.